

# CPNE3/Copine 3 Antibody

Rabbit Polyclonal

Antigen Affinity Purified

Protein ID O75131.1

Catalog No. A305-098A

GeneID 8895

Lot No. A305-098A-1



<b>APPLICATIONS</b>	IP
<b>SPECIES REACTIVITY</b>	Human
<b>PRESUMED REACTIVITY</b>	Based on 100% sequence identity, this antibody is predicted to react with Mouse and Orangutan
<b>AMOUNT</b>	100 µl
<b>CONCENTRATION</b>	1000 µg/ml
<b>STORAGE/SHELF LIFE</b>	2 - 8° C / 1 year from date of receipt
<b>PHYSICAL STATE</b>	Liquid
<b>BUFFER</b>	Tris-citrate/phosphate buffer, pH 7 to 8 containing 0.09% Sodium Azide
<b>ISOTYPE</b>	IgG
<b>ORIGIN</b>	USA
<b>PRODUCTION PROCEDURES</b>	Antibody was affinity purified using an epitope specific to CPNE3/Copine 3 immobilized on solid support.

The epitope recognized by A305-098A maps to a region between residue 487 to 537 of human Copine-3 using the numbering given in entry O75131.1 (GeneID 8895).

Antibody concentration was determined by extinction coefficient: absorbance at 280 nm of 1.4 equals 1.0 mg of IgG.

**APPLICATIONS** Centrifuge tube to remove product from lid. Optimal working dilutions should be determined experimentally by the investigator. Prepare working dilution immediately before use.

Western Blot Not recommended. A305-098A has not performed satisfactorily when used for WB of CPNE3/Copine 3 in crude preparations (e.g. whole cell lysate). This antibody can be used for WB of enriched (e.g. immunoprecipitated) sources of CPNE3/Copine 3.

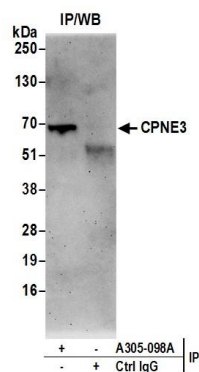
Immunoprecipitation 2 - 10 µg/mg lysate

**APPLICATION NOTES** Western blot of immunoprecipitates performed using Normal Pig Serum (Cat. No. S100-020), Goat anti-Rabbit Light Chain HRP Conjugate (Cat. No. A120-113P) and 4-20% SDS-PAGE (link to IP-western blot protocol in Additional Info section below).

**ADDITIONAL INFO** <https://www.bethyl.com/product/A305-098A>

Use the link above to view SDS, a current list of citations, and other product specific information. IP-western blot protocol: [https://www.bethyl.com/content/protocol\\_IP\\_WB](https://www.bethyl.com/content/protocol_IP_WB)

This document certifies that this product has met all of the quality control standards defined by Bethyl Laboratories, Inc.  
Eric McIntush, PhD | Chief Scientific Officer Date: June 21, 2019



**Detection of human CPNE3 by western blot of immunoprecipitates.** *Samples:* Whole cell lysate (0.5 or 1.0 mg per IP reaction; 20% of IP loaded) from 293T cells prepared using NETN lysis buffer. *Antibodies:* Affinity purified rabbit anti-CPNE3 antibody A305-098A (lot A305-098A-1) used for IP at 6 µg per reaction. For blotting immunoprecipitated CPNE3, A305-098A was used at 1 µg/ml. *Detection:* Chemiluminescence with an exposure time of 3 minutes.