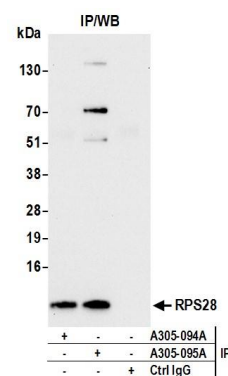


#### Detection of human and mouse RPS28 by western blot.

**Samples:** Whole cell lysate (50 µg) from HeLa, HEK293T, Jurkat, mouse TCMK-1, and mouse NIH 3T3 cells prepared using NETN lysis buffer. **Antibody:** Affinity purified rabbit anti-RPS28 antibody A305-095A (lot A305-095A-1) used for WB at 0.04 µg/ml. **Detection:** Chemiluminescence with an exposure time of 10 seconds.



#### Detection of human RPS28 by western blot of immunoprecipitates.

**Samples:** Whole cell lysate (0.5 or 1.0 mg per IP reaction; 20% of IP loaded) from 293T cells prepared using NETN lysis buffer. **Antibodies:** Affinity purified rabbit anti-RPS28 antibody A305-095A (lot A305-095A-1) used for IP at 6 µg per reaction. RPS28 was also immunoprecipitated by rabbit anti-RPS28 antibody A305-094A. For blotting immunoprecipitated RPS28, A305-095A was used at 0.4 µg/ml. **Detection:** Chemiluminescence with an exposure time of 10 seconds.