

ZCCHC6 Antibody

Rabbit Polyclonal

Antigen Affinity Purified

Protein ID Q5VYS8.1

Catalog No. A305-090A

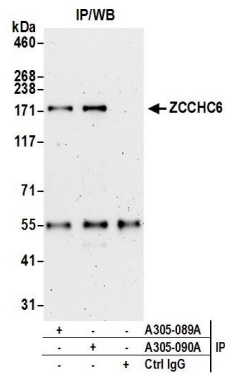
GeneID 79670

Lot No. A305-090A-1



APPLICATIONS	IP
SPECIES REACTIVITY	Human
AMOUNT	100 µl
CONCENTRATION	1000 µg/ml
STORAGE/SHELF LIFE	2 - 8° C / 1 year from date of receipt
PHYSICAL STATE	Liquid
BUFFER	Tris-citrate/phosphate buffer, pH 7 to 8 containing 0.09% Sodium Azide
ISOTYPE	IgG
ORIGIN	USA
PRODUCTION PROCEDURES	Antibody was affinity purified using an epitope specific to ZCCHC6 immobilized on solid support. The epitope recognized by A305-090A maps to a region between residue 1400 to 1450 of human Terminal uridylyltransferase 7 using the numbering given in entry Q5VYS8.1 (GeneID 79670). Antibody concentration was determined by extinction coefficient: absorbance at 280 nm of 1.4 equals 1.0 mg of IgG.
APPLICATIONS	Centrifuge tube to remove product from lid. Optimal working dilutions should be determined experimentally by the investigator. Prepare working dilution immediately before use. Western Blot Not recommended. Use rabbit anti-ZCCHC6 antibody A305-089A. Immunoprecipitation 2 - 10 µg/mg lysate
APPLICATION NOTES	Western blot of immunoprecipitates performed using Normal Pig Serum (Cat. No. S100-020), Goat anti-Rabbit Light Chain HRP Conjugate (Cat. No. A120-113P) and 4-8% SDS-PAGE (link to IP-western blot protocol in Additional Info section below).
ADDITIONAL INFO	https://www.bethyl.com/product/A305-090A Use the link above to view SDS, a current list of citations, and other product specific information. IP-western blot protocol: https://www.bethyl.com/content/protocol_IP_WB

This document certifies that this product has met all of the quality control standards defined by Bethyl Laboratories, Inc.
Eric McIntush, PhD | Chief Scientific Officer Date: June 21, 2019



Detection of human ZCCHC6 by western blot of immunoprecipitates. *Samples:* Whole cell lysate (0.5 or 1.0 mg per IP reaction; 20% of IP loaded) from 293T cells prepared using NETN lysis buffer. *Antibodies:* Affinity purified rabbit anti-ZCCHC6 antibody A305-090A (lot A305-090A-1) used for IP at 6 µg per reaction. ZCCHC6 was also immunoprecipitated by rabbit anti-ZCCHC6 antibody A305-089A. For blotting immunoprecipitated ZCCHC6, A305-090A was used at 1 µg/ml. *Detection:* Chemiluminescence with an exposure time of 3 minutes.