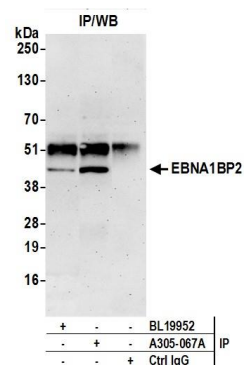


Detection of human EBNA1BP2 by western blot. *Samples:* Whole cell lysate (50 µg) from HeLa, HEK293T, and Jurkat cells prepared using NETN lysis buffer. *Antibody:* Affinity purified rabbit anti-EBNA1BP2 antibody A305-067A (lot A305-067A-1) used for WB at 0.4 µg/ml. *Detection:* Chemiluminescence with an exposure time of 30 seconds.



Detection of human EBNA1BP2 by western blot of immunoprecipitates. *Samples:* Whole cell lysate (0.5 or 1.0 mg per IP reaction; 20% of IP loaded) from HeLa cells prepared using NETN lysis buffer. *Antibodies:* Affinity purified rabbit anti-EBNA1BP2 antibody A305-067A (lot A305-067A-1) used for IP at 6 µg per reaction. EBNA1BP2 was also immunoprecipitated by rabbit anti-EBNA1BP2 antibody BL19952. For blotting immunoprecipitated EBNA1BP2, A305-067A was used at 1 µg/ml. *Detection:* Chemiluminescence with an exposure time of 3 minutes.