

# RPL10A/Ribosomal Protein L10a Antibody

Rabbit Polyclonal

Antigen Affinity Purified	RefSeq ID	P62906.2
Catalog No. A305-061A	Uniprot ID	P62906
Lot No. 2	GeneID	4736

---

<b>APPLICATIONS</b>	WB, IP
<b>SPECIES REACTIVITY</b>	Human, Mouse
<b>PRESUMED REACTIVITY</b>	Based on 100% sequence identity, this antibody is predicted to react with Rat, X. laevis, Bovine and Pig
<b>AMOUNT</b>	100 µl
<b>CONCENTRATION</b>	1000 µg/ml
<b>STORAGE/SHELF LIFE</b>	2 – 8°C / 1 year from date of receipt
<b>PHYSICAL STATE</b>	Liquid
<b>BUFFER</b>	Tris-citrate/phosphate buffer, pH 7 to 8 containing 0.09% Sodium Azide
<b>ISOTYPE</b>	IgG
<b>ORIGIN</b>	USA
<b>PRODUCTION PROCEDURES</b>	Antibody was affinity purified using an epitope specific to RPL10A/Ribosomal Protein L10a immobilized on solid support.

The epitope recognized by A305-061A maps to a region between residue 50 to 100 of human 60S ribosomal protein L10a using the numbering given in entry P62906.2 (GeneID 4736).

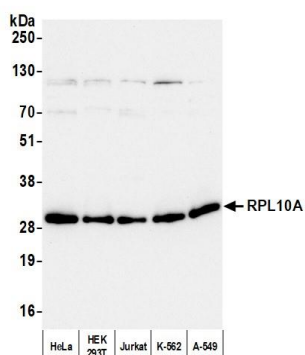
Antibody concentration was determined by extinction coefficient: absorbance at 280 nm of 1.4 equals 1.0 mg of IgG.

**APPLICATIONS** Centrifuge tube to remove product from lid. Optimal working dilutions should be determined experimentally by the investigator. Prepare working dilution immediately before use.

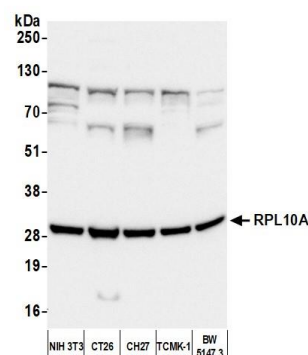
Western Blot	1:2,000 – 1:10,000
Immunoprecipitation	2 – 10 µg/mg lysate

**ADDITIONAL INFO** <https://www.fortislifecom.com/p/A305-061A>  
Use the link above to view SDS, a current list of citations, and other product specific information.

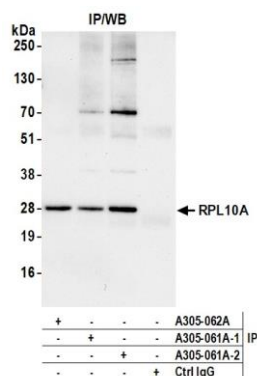
This document certifies that this product has met all of the quality control standards defined by Bethyl Laboratories, Inc.  
Michael Spencer, PhD Date: May 4, 2023



**Detection of human RPL10A by western blot.** *Samples:* Whole cell lysate (10  $\mu$ g) from HeLa, HEK293T, Jurkat, K-562, and A-549 cells prepared using NETN lysis buffer. *Antibody:* Affinity purified rabbit anti-RPL10A antibody (A305-061A lot 2) used for WB at 0.1  $\mu$ g/ml. *Detection:* Chemiluminescence with an exposure time of 10 seconds.



**Detection of mouse RPL10A by western blot.** *Samples:* Whole cell lysate (50  $\mu$ g) from NIH 3T3, CT26, CH27, TCMK-1, and BW5147.3 cells prepared using NETN lysis buffer. *Antibody:* Affinity purified rabbit anti-RPL10A antibody (A305-061A lot 2) used for WB at 0.1  $\mu$ g/ml. *Detection:* Chemiluminescence with an exposure time of 1 second.



**Detection of human RPL10A by western blot of immunoprecipitates.** *Samples:* Whole cell lysate (1.0 mg per IP reaction; 20% of IP loaded) from HEK293T cells prepared using NETN lysis buffer. *Antibodies:* Affinity purified rabbit anti-RPL10A antibody (A305-061A lot 2) used for IP at 6  $\mu$ g per reaction. RPL10A was also immunoprecipitated by a previous lot of this antibody (A305-061A lot 1) and a second antibody against a different epitope of RPL10A (A305-062A). For blotting immunoprecipitated RPL10A, A305-061A was used at 0.4  $\mu$ g/ml. *Detection:* Chemiluminescence with an exposure time of 30 seconds.