

RPL29/ Ribosomal Protein L29 Antibody

Rabbit Polyclonal

Antigen Affinity Purified Protein ID P47914.2

Catalog No. A305-057A GeneID 6159

Lot No. A305-057A-1



APPLICATIONS	WB, IP
SPECIES REACTIVITY	Human, Mouse
AMOUNT	100 µl
CONCENTRATION	1000 µg/ml
STORAGE/SHELF LIFE	2 – 8° C / 1 year from date of receipt
PHYSICAL STATE	Liquid
BUFFER	Tris-citrate/phosphate buffer, pH 7 to 8 containing 0.09% Sodium Azide
ISOTYPE	IgG
ORIGIN	USA
PRODUCTION PROCEDURES	Antibody was affinity purified using an epitope specific to RPL29/ Ribosomal Protein L29 immobilized on solid support.

The epitope recognized by A305-057A maps to a region between residue 109 to 159 of human 60S ribosomal protein L29 using the numbering given in entry P47914.2 (GeneID 6159).

Antibody concentration was determined by extinction coefficient: absorbance at 280 nm of 1.4 equals 1.0 mg of IgG.

APPLICATIONS Centrifuge tube to remove product from lid. Optimal working dilutions should be determined experimentally by the investigator. Prepare working dilution immediately before use.

Western Blot 1:10,000 – 1:25,000

Immunoprecipitation 2 – 10 µg/mg lysate

APPLICATION NOTES Western blot of immunoprecipitates performed using Normal Pig Serum (Cat. No. S100-020), Goat anti-Rabbit Light Chain HRP Conjugate (Cat. No. A120-113P) and 4-12% SDS-PAGE (link to IP-western blot protocol in Additional Info section below).

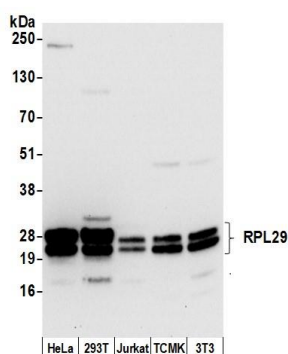
Western blot of lysates performed using standard western blot reagents and 4-12% SDS-PAGE.

ADDITIONAL INFO <https://www.bethyl.com/product/A305-057A>

Use the link above to view SDS, a current list of citations, and other product specific information.

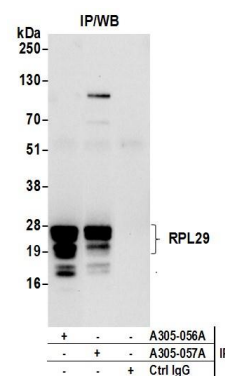
IP-western blot protocol: https://www.bethyl.com/content/protocol_IP_WB

This document certifies that this product has met all of the quality control standards defined by Bethyl Laboratories, Inc.
Eric McIntush, PhD | Chief Scientific Officer Date: June 21, 2019



Detection of human and mouse RPL29 by western blot.

Samples: Whole cell lysate (50 µg) from HeLa, HEK293T, Jurkat, mouse TCMK-1, and mouse NIH 3T3 cells prepared using NETN lysis buffer. **Antibody:** Affinity purified rabbit anti-RPL29 antibody A305-057A (lot A305-057A-1) used for WB at 0.04 µg/ml. **Detection:** Chemiluminescence with an exposure time of 10 seconds.



Detection of human RPL29 by western blot of immunoprecipitates.

Samples: Whole cell lysate (0.5 or 1.0 mg per IP reaction; 20% of IP loaded) from 293T cells prepared using NETN lysis buffer. **Antibodies:** Affinity purified rabbit anti-RPL29 antibody A305-057A (lot A305-057A-1) used for IP at 6 µg per reaction. RPL29 was also immunoprecipitated by rabbit anti-RPL29 antibody A305-056A. For blotting immunoprecipitated RPL29, A305-057A was used at 0.4 µg/ml. **Detection:** Chemiluminescence with an exposure time of 10 seconds.