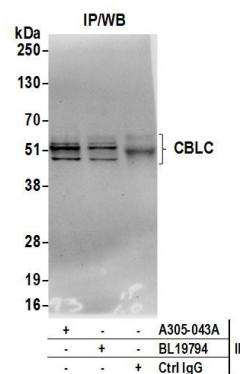


Detection of human and mouse CBLC by western blot.
Samples: Whole cell lysate (50 µg) from HeLa, HEK293T, Jurkat, mouse TCMK-1, and mouse NIH 3T3 cells prepared using NETN lysis buffer. *Antibody:* Affinity purified rabbit anti-CBLC antibody A305-043A (lot A305-043A-1) used for WB at 0.1 µg/ml. *Detection:* Chemiluminescence with an exposure time of 30 seconds.



Detection of human CBLC by western blot of immunoprecipitates.
Samples: Whole cell lysate (0.5 or 1.0 mg per IP reaction; 20% of IP loaded) from HeLa cells prepared using NETN lysis buffer. *Antibodies:* Affinity purified rabbit anti-CBLC antibody A305-043A (lot A305-043A-1) used for IP at 6 µg per reaction. CBLC was also immunoprecipitated by rabbit anti-CBLC antibody BL19794. For blotting immunoprecipitated CBLC, A305-043A was used at 1 µg/ml. *Detection:* Chemiluminescence with an exposure time of 30 seconds.