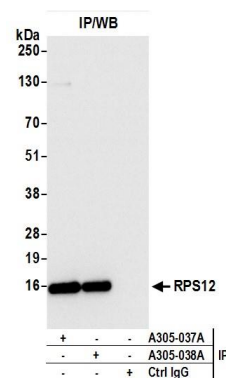


Detection of human and mouse RPS12 by western blot.

Samples: Whole cell lysate (50 µg) from HeLa, HEK293T, Jurkat, mouse TCMK-1, and mouse NIH 3T3 cells prepared using NETN lysis buffer. **Antibody:** Affinity purified rabbit anti-RPS12 antibody A305-037A (lot A305-037A-1) used for WB at 0.04 µg/ml. **Detection:** Chemiluminescence with an exposure time of 3 seconds.



Detection of human RPS12 by western blot of immunoprecipitates.

Samples: Whole cell lysate (0.5 or 1.0 mg per IP reaction; 20% of IP loaded) from 293T cells prepared using NETN lysis buffer. **Antibodies:** Affinity purified rabbit anti-RPS12 antibody A305-037A (lot A305-037A-1) used for IP at 6 µg per reaction. RPS12 was also immunoprecipitated by rabbit anti-RPS12 antibody A305-038A. For blotting immunoprecipitated RPS12, A305-037A was used at 0.4 µg/ml. **Detection:** Chemiluminescence with an exposure time of 3 seconds.