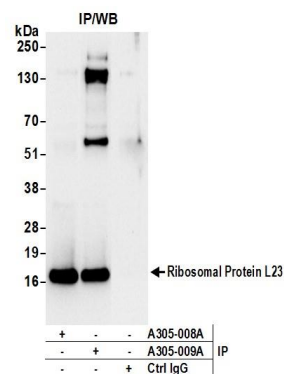


**Detection of human and mouse Ribosomal Protein L23 by western blot.** *Samples:* Whole cell lysate (50 µg) from HeLa, HEK293T, Jurkat, mouse TCMK-1, and mouse NIH 3T3 cells prepared using NETN lysis buffer. *Antibody:* Affinity purified rabbit anti-Ribosomal Protein L23 antibody A305-009A (lot A305-009A-1) used for WB at 0.1 µg/ml. *Detection:* Chemiluminescence with an exposure time of 10 seconds.



**Detection of human Ribosomal Protein L23 by western blot of immunoprecipitates.** *Samples:* Whole cell lysate (0.5 or 1.0 mg per IP reaction; 20% of IP loaded) from 293T cells prepared using NETN lysis buffer. *Antibodies:* Affinity purified rabbit anti-Ribosomal Protein L23 antibody A305-009A (lot A305-009A-1) used for IP at 6 µg per reaction. Ribosomal Protein L23 was also immunoprecipitated by rabbit anti-Ribosomal Protein L23 antibody A305-008A. For blotting immunoprecipitated Ribosomal Protein L23, A305-009A was used at 1 µg/ml. *Detection:* Chemiluminescence with an exposure time of 10 seconds.