

Ribosomal Protein S3A/RPS3A Antibody

Rabbit Polyclonal

Antigen Affinity Purified

Protein ID P61247.2

Catalog No. A305-001A

GeneID 6189

Lot No. A305-001A-1



APPLICATIONS WB, IP, IHC

SPECIES REACTIVITY Human, Mouse

PRESUMED REACTIVITY Based on 100% sequence identity, this antibody is predicted to react with Rat, Zebrafish, X. laevis, X. tropicalis and Bovine

AMOUNT 100 µl

CONCENTRATION 1000 µg/ml

STORAGE/SHELF LIFE 2 – 8° C / 1 year from date of receipt

PHYSICAL STATE Liquid

BUFFER Tris-citrate/phosphate buffer, pH 7 to 8 containing 0.09% Sodium Azide

ISOTYPE IgG

ORIGIN USA

PRODUCTION PROCEDURES Antibody was affinity purified using an epitope specific to Ribosomal Protein S3A/RPS3A immobilized on solid support.

The epitope recognized by A305-001A maps to a region between residue 1 to 50 of human 40S ribosomal protein S3a using the numbering given in entry P61247.2 (GeneID 6189).

Antibody concentration was determined by extinction coefficient: absorbance at 280 nm of 1.4 equals 1.0 mg of IgG.

APPLICATIONS Centrifuge tube to remove product from lid. Optimal working dilutions should be determined experimentally by the investigator. Prepare working dilution immediately before use.

Western Blot 1:2,000 – 1:10,000

Immunoprecipitation 2 – 10 µg/mg lysate

Immunohistochemistry 1:500 – 1:2,000. Epitope retrieval with citrate buffer pH 6.0 is recommended for FFPE tissue sections.

APPLICATION NOTES Western blot of immunoprecipitates performed using Normal Pig Serum (Cat. No. S100-020), Goat anti-Rabbit Light Chain HRP Conjugate (Cat. No. A120-113P) and 4-20% SDS-PAGE (link to IP-western blot protocol in Additional Info section below).

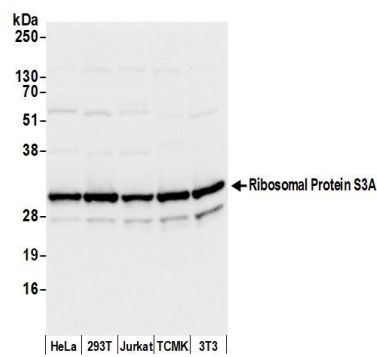
IHC HUMAN CONTROLS Western blot of lysates performed using standard western blot reagents and 4-20% SDS-PAGE. Ovarian Carcinoma

ADDITIONAL INFO <https://www.bethyl.com/product/A305-001A>

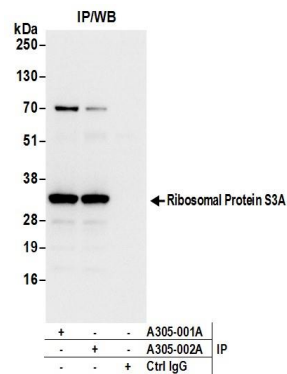
Use the link above to view SDS, a current list of citations, and other product specific information.

IP-western blot protocol: https://www.bethyl.com/content/protocol_IP_WB

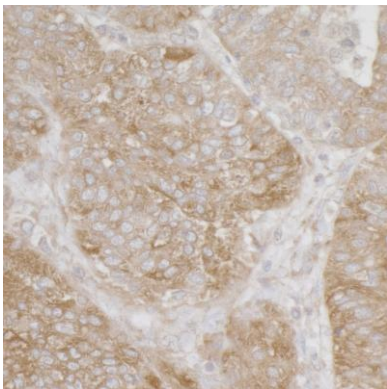
This document certifies that this product has met all of the quality control standards defined by Bethyl Laboratories, Inc.
Eric McIntush, PhD | Chief Scientific Officer Date: June 21, 2019



Detection of human and mouse Ribosomal Protein S3A by western blot. *Samples:* Whole cell lysate (50 µg) from HeLa, HEK293T, Jurkat, mouse TCMK-1, and mouse NIH 3T3 cells prepared using NETN lysis buffer. *Antibody:* Affinity purified rabbit anti-Ribosomal Protein S3A antibody A305-001A (lot A305-001A-1) used for WB at 0.1 µg/ml. *Detection:* Chemiluminescence with an exposure time of 3 seconds.



Detection of human Ribosomal Protein S3A by western blot of immunoprecipitates. *Samples:* Whole cell lysate (0.5 or 1.0 mg per IP reaction; 20% of IP loaded) from 293T cells prepared using NETN lysis buffer. *Antibodies:* Affinity purified rabbit anti-Ribosomal Protein S3A antibody A305-001A (lot A305-001A-1) used for IP at 6 µg per reaction. Ribosomal Protein S3A was also immunoprecipitated by rabbit anti-Ribosomal Protein S3A antibody A305-002A. For blotting immunoprecipitated Ribosomal Protein S3A, A305-001A was used at 0.4 µg/ml. *Detection:* Chemiluminescence with an exposure time of 3 seconds.



Detection of human Ribosomal Protein S3A by immunohistochemistry. *Sample:* FFPE section of human ovarian carcinoma. *Antibody:* Affinity purified rabbit anti-Ribosomal Protein S3A (Cat. No. A305-001A Lot1) used at a dilution of 1:1,000 (1 µg/ml). *Detection:* DAB