

ANAPC10/APC10 Antibody

Rabbit Polyclonal

Antigen Affinity Purified Protein ID Q9UM13.1

Catalog No. A304-980A GeneID 10393

Lot No. A304-980A-1



APPLICATIONS	WB, IP
SPECIES REACTIVITY	Human, Mouse
PRESUMED REACTIVITY	Based on 100% sequence identity, this antibody is predicted to react with Bovine
AMOUNT	100 µl
CONCENTRATION	1000 µg/ml
STORAGE/SHELF LIFE	2 - 8° C / 1 year from date of receipt
PHYSICAL STATE	Liquid
BUFFER	Tris-citrate/phosphate buffer, pH 7 to 8 containing 0.09% Sodium Azide
ISOTYPE	IgG
ORIGIN	USA
PRODUCTION PROCEDURES	Antibody was affinity purified using an epitope specific to ANAPC10/APC10 immobilized on solid support.

The epitope recognized by A304-980A maps to a region between residue 1 to 50 of human Anaphase-promoting complex subunit 10 using the numbering given in entry Q9UM13.1 (GeneID 10393).

Antibody concentration was determined by extinction coefficient: absorbance at 280 nm of 1.4 equals 1.0 mg of IgG.

APPLICATIONS Centrifuge tube to remove product from lid. Optimal working dilutions should be determined experimentally by the investigator. Prepare working dilution immediately before use.

Western Blot 1:500 - 1:2,500

Immunoprecipitation 2 - 10 µg/mg lysate

APPLICATION NOTES Western blot of immunoprecipitates performed using Normal Pig Serum (Cat. No. S100-020), Goat anti-Rabbit Light Chain HRP Conjugate (Cat. No. A120-113P) and 4-20% SDS-PAGE (link to IP-western blot protocol in Additional Info section below).

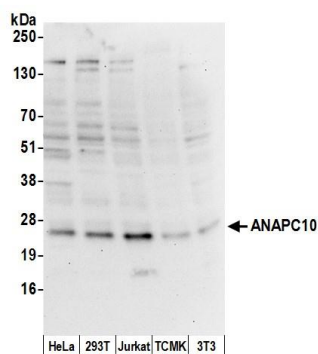
Western blot of lysates performed using standard western blot reagents and 4-20% SDS-PAGE.

ADDITIONAL INFO <https://www.bethyl.com/product/A304-980A>

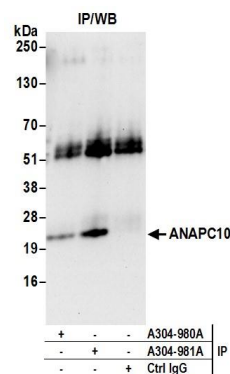
Use the link above to view SDS, a current list of citations, and other product specific information.

IP-western blot protocol: https://www.bethyl.com/content/protocol_IP_WB

This document certifies that this product has met all of the quality control standards defined by Bethyl Laboratories, Inc.
Eric McIntush, PhD | Chief Scientific Officer Date: June 21, 2019



Detection of human and mouse ANAPC10 by western blot. *Samples:* Whole cell lysate (15 µg) from HeLa, HEK293T, Jurkat, mouse TCMK-1, and mouse NIH 3T3 cells prepared using NETN lysis buffer. *Antibody:* Affinity purified rabbit anti-ANAPC10 antibody A304-980A (lot A304-980A-1) used for WB at 1 µg/ml. *Detection:* Chemiluminescence with an exposure time of 30 seconds.



Detection of human ANAPC10 by western blot of immunoprecipitates. *Samples:* Whole cell lysate (0.5 or 1.0 mg per IP reaction; 20% of IP loaded) from HeLa cells prepared using NETN lysis buffer. *Antibodies:* Affinity purified rabbit anti-ANAPC10 antibody A304-980A (lot A304-980A-1) used for IP at 6 µg per reaction. ANAPC10 was also immunoprecipitated by rabbit anti-ANAPC10 antibody A304-981A. For blotting immunoprecipitated ANAPC10, A304-980A was used at 1 µg/ml. *Detection:* Chemiluminescence with an exposure time of 30 seconds.