

SSR1 /TRAP alpha Antibody

Rabbit Polyclonal

Antigen Affinity Purified

Protein ID P43307.3

Catalog No. A304-977A

GeneID 6745

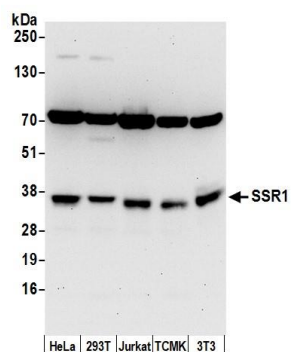
Lot No. A304-977A-1



APPLICATIONS	WB				
SPECIES REACTIVITY	Human, Mouse				
PRESUMED REACTIVITY	Based on 100% sequence identity, this antibody is predicted to react with Rat, Bovine, Dog and Orangutan				
AMOUNT	100 µl				
CONCENTRATION	1000 µg/ml				
STORAGE/SHELF LIFE	2 – 8° C / 1 year from date of receipt				
PHYSICAL STATE	Liquid				
BUFFER	Tris-citrate/phosphate buffer, pH 7 to 8 containing 0.09% Sodium Azide				
ISOTYPE	IgG				
ORIGIN	USA				
PRODUCTION PROCEDURES	<p>Antibody was affinity purified using an epitope specific to SSR1 /TRAP alpha immobilized on solid support.</p> <p>The epitope recognized by A304-977A maps to a region between residue 75 to 125 of human Translocon-associated protein subunit alpha using the numbering given in entry P43307.3 (GeneID 6745).</p> <p>Antibody concentration was determined by extinction coefficient: absorbance at 280 nm of 1.4 equals 1.0 mg of IgG.</p>				
APPLICATIONS	<p>Centrifuge tube to remove product from lid. Optimal working dilutions should be determined experimentally by the investigator. Prepare working dilution immediately before use.</p> <table><tr><td>Western Blot</td><td>1:1,000 – 1:5,000</td></tr><tr><td>Immunoprecipitation</td><td>Not recommended</td></tr></table>	Western Blot	1:1,000 – 1:5,000	Immunoprecipitation	Not recommended
Western Blot	1:1,000 – 1:5,000				
Immunoprecipitation	Not recommended				
APPLICATION NOTES	Western blot of lysates performed using standard western blot reagents and 4–20% SDS-PAGE.				
ADDITIONAL INFO	<p>https://www.bethyl.com/product/A304-977A</p> <p>Use the link above to view SDS, a current list of citations, and other product specific information.</p>				

This document certifies that this product has met all of the quality control standards defined by Bethyl Laboratories, Inc.
Eric McIntush, PhD | Chief Scientific Officer

Date: June 21, 2019

**Detection of human and mouse SSR1 by western blot.**

Samples: Whole cell lysate (50 µg) from HeLa, HEK293T, Jurkat, mouse TCMK-1, and mouse NIH 3T3 cells prepared using NETN lysis buffer. *Antibody:* Affinity purified rabbit anti-SSR1 antibody A304-977A (lot A304-977A-1) used for WB at 0.4 µg/ml. *Detection:* Chemiluminescence with an exposure time of 30 seconds.