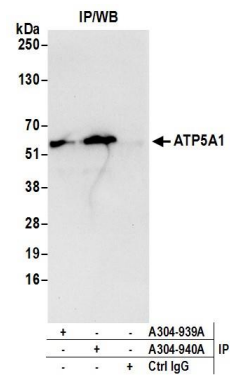


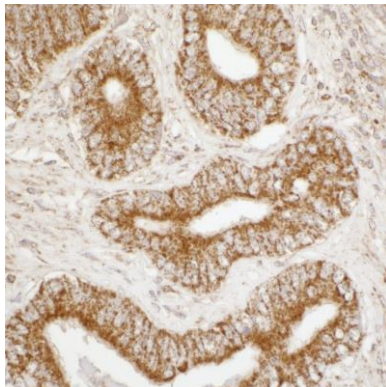
Detection of human and mouse ATP5A1 by western blot.

Samples: Whole cell lysate (50 µg) from HeLa, HEK293T, Jurkat, mouse TCMK-1, and mouse NIH 3T3 cells prepared using NETN lysis buffer. **Antibody:** Affinity purified rabbit anti-ATP5A1 antibody A304-940A (lot A304-940A-1) used for WB at 0.1 µg/ml. **Detection:** Chemiluminescence with an exposure time of 10 seconds.



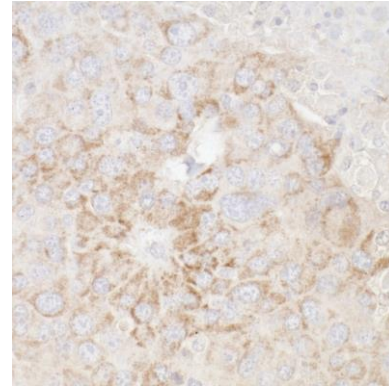
Detection of human ATP5A1 by western blot of immunoprecipitates.

Samples: Whole cell lysate (0.5 or 1.0 mg per IP reaction; 20% of IP loaded) from 293T cells prepared using NETN lysis buffer. **Antibodies:** Affinity purified rabbit anti-ATP5A1 antibody A304-940A (lot A304-940A-1) used for IP at 6 µg per reaction. ATP5A1 was also immunoprecipitated by rabbit anti-ATP5A1 antibody A304-939A. For blotting immunoprecipitated ATP5A1, A304-940A was used at 0.4 µg/ml. **Detection:** Chemiluminescence with an exposure time of 10 seconds.



Detection of human ATP5A1 by immunohistochemistry.

Sample: FFPE section of human prostate carcinoma. **Antibody:** Affinity purified rabbit anti-ATP5A1 (Cat. No. A304-940A Lot1) used at a dilution of 1:5,000 (0.2 µg/ml). **Detection:** DAB



Detection of mouse ATP5A1 by immunohistochemistry.

Sample: FFPE section of mouse renal cell carcinoma. **Antibody:** Affinity purified rabbit anti-ATP5A1 (Cat. No. A304-940A Lot1) used at a dilution of 1:5,000 (0.2 µg/ml). **Detection:** DAB