

ATP5A1 Antibody

Rabbit Polyclonal

Antigen Affinity Purified Protein ID P25705.1

Catalog No. A304-939A GeneID 498

Lot No. A304-939A-2

APPLICATIONS	WB, IP, IHC
SPECIES REACTIVITY	Human, Mouse
PRESUMED REACTIVITY	Based on 100% sequence identity, this antibody is predicted to react with Rat, D. melanogaster, Bovine, Pig, Orangutan and Chimpanzee
AMOUNT	100 µl
CONCENTRATION	1000 µg/ml
STORAGE/SHELF LIFE	2 – 8°C / 1 year from date of receipt
PHYSICAL STATE	Liquid
BUFFER	Tris-citrate/phosphate buffer, pH 7 to 8 containing 0.09% Sodium Azide
ISOTYPE	IgG
ORIGIN	USA
PRODUCTION PROCEDURES	Antibody was affinity purified using an epitope specific to ATP5A1 immobilized on solid support.

The epitope recognized by A304-939A maps to a region between residue 100 to 150 of human ATP synthase subunit alpha, mitochondrial using the numbering given in entry P25705.1 (GeneID 498).

Antibody concentration was determined by extinction coefficient: absorbance at 280 nm of 1.4 equals 1.0 mg of IgG.

APPLICATIONS Centrifuge tube to remove product from lid. Optimal working dilutions should be determined experimentally by the investigator. Prepare working dilution immediately before use.

Western Blot 1:10,000 – 1:25,000

Immunoprecipitation 2 – 10 µg/mg lysate

Immunohistochemistry 1:2,000 – 1:10,000. Epitope retrieval with citrate buffer pH 6.0 is recommended for FFPE tissue sections.

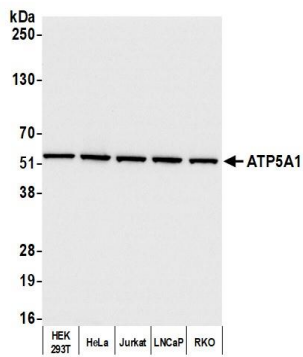
IHC HUMAN CONTROLS Prostate Carcinoma

IHC MOUSE CONTROLS Renal Cell Carcinoma

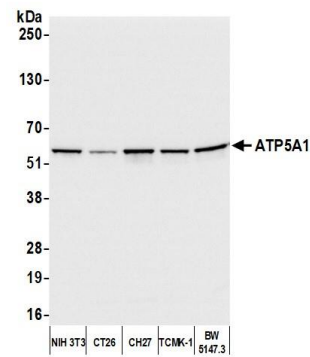
ADDITIONAL INFO <https://www.fortislife.com/p/A304-939A>

Use the link above to view SDS, a current list of citations, and other product specific information.

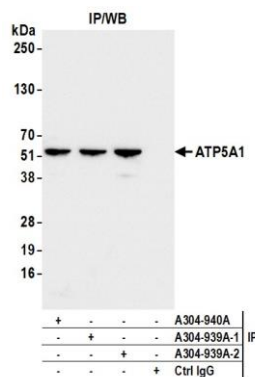
This document certifies that this product has met all of the quality control standards defined by Bethyl Laboratories, Inc.
Michael Spencer, PhD Date: July 26, 2022



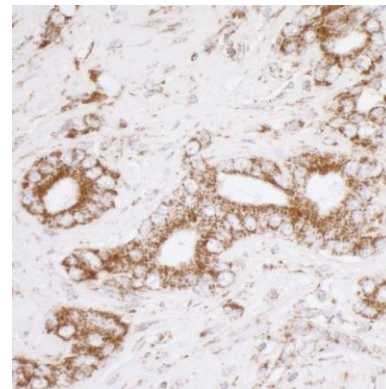
Detection of human ATP5A1 by western blot. *Samples:* Whole cell lysate (10 μ g) from HEK293T, HeLa, Jurkat, LNCaP, and RKO cells prepared using NETN lysis buffer. *Antibody:* Affinity purified rabbit anti-ATP5A1 antibody (A304-939A lot 2) used for WB at 0.04 μ g/ml. *Detection:* Chemiluminescence with an exposure time of 1 second.



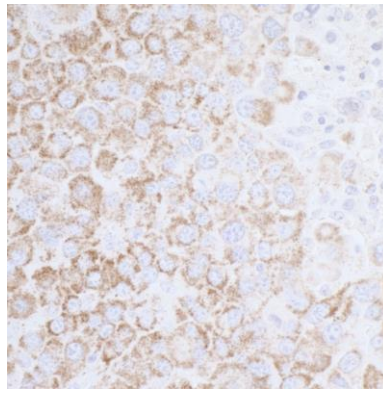
Detection of mouse ATP5A1 by western blot. *Samples:* Whole cell lysate (10 μ g) from NIH 3T3, CT26, CH27, TCMK-1, and BW5147.3 cells prepared using NETN lysis buffer. *Antibody:* Affinity purified rabbit anti-ATP5A1 antibody (A304-939A lot 2) used for WB at 0.04 μ g/ml. *Detection:* Chemiluminescence with an exposure time of 1 second.



Detection of human ATP5A1 by western blot of immunoprecipitates. *Samples:* Whole cell lysate (1.0 mg per IP reaction; 5% of IP loaded) from HEK293T cells prepared using NETN lysis buffer. *Antibodies:* Affinity purified rabbit anti-ATP5A1 antibody (A304-939A lot 2) used for IP at 6 μ g per reaction. ATP5A1 was also immunoprecipitated by a previous lot of this antibody (A304-939A lot 1) and a second antibody against a different epitope of ATP5A1 (A304-940A). For blotting immunoprecipitated ATP5A1, A304-939A was used at 0.04 μ g/ml. *Detection:* Chemiluminescence with an exposure time of 1 second.



Detection of human ATP5A1 by immunohistochemistry. *Sample:* FFPE section of human prostate carcinoma. *Antibody:* Affinity purified rabbit anti-ATP5A1 (Cat. No. A304-939A Lot1) used at a dilution of 1:5,000 (0.2 μ g/ml). *Detection:* DAB

**Detection of mouse ATP5A1 by immunohistochemistry.**

Sample: FFPE section of mouse renal cell carcinoma.

Antibody: Affinity purified rabbit anti-ATP5A1 (Cat. No. A304-939A Lot1) used at a dilution of 1:5,000 (0.2µg/ml).

Detection: DAB