

QRICH1 Antibody

Rabbit Polyclonal

Antigen Affinity Purified

RefSeq ID Q2TAL8.1

Catalog No. A304-934A

Uniprot ID Q2TAL8

Lot No. 2

GeneID 54870

APPLICATIONS	WB, IP
SPECIES REACTIVITY	Human, Mouse
PRESUMED REACTIVITY	Based on 100% sequence identity, this antibody is predicted to react with Bovine
AMOUNT	100 µl
CONCENTRATION	1000 µg/ml
STORAGE/SHELF LIFE	2 – 8°C / 1 year from date of receipt
PHYSICAL STATE	Liquid
BUFFER	Tris-citrate/phosphate buffer, pH 7 to 8 containing 0.09% Sodium Azide
ISOTYPE	IgG
ORIGIN	USA
PRODUCTION PROCEDURES	Antibody was affinity purified using an epitope specific to QRICH1 immobilized on solid support.

The epitope recognized by A304-934A maps to a region between residue 250 to 300 of human Glutamine-rich protein 1 using the numbering given in entry Q2TAL8.1 (GeneID 54870).

Antibody concentration was determined by extinction coefficient: absorbance at 280 nm of 1.4 equals 1.0 mg of IgG.

APPLICATIONS Centrifuge tube to remove product from lid. Optimal working dilutions should be determined experimentally by the investigator. Prepare working dilution immediately before use.

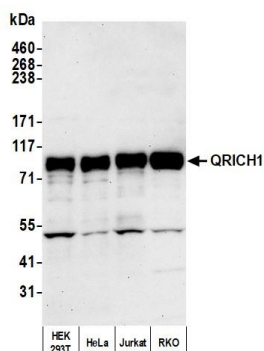
Western Blot 1:10,000 – 1:25,000

Immunoprecipitation 2 – 10 µg/mg lysate

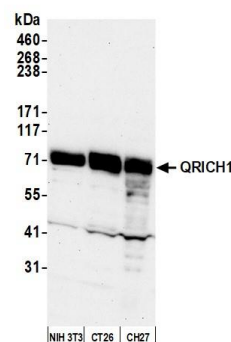
ADDITIONAL INFO <https://www.fortislife.com/p/A304-934A>

Use the link above to view SDS, a current list of citations, and other product specific information.

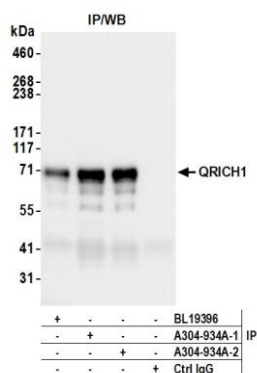
This document certifies that this product has met all of the quality control standards defined by Bethyl Laboratories, Inc.
Michael Spencer, PhD Date: June 9, 2023



Detection of human QRICH1 by western blot. *Samples:* Whole cell lysate (25 µg) from HEK293T, HeLa, Jurkat, and RKO cells prepared using NETN lysis buffer. *Antibody:* Affinity purified rabbit anti-QRICH1 antibody (A304-934A lot 2) used for WB at 0.1 µg/ml. *Detection:* Chemiluminescence with an exposure time of 3 minutes.



Detection of human QRICH1 by western blot. *Samples:* Whole cell lysate (50 µg) from NIH 3T3, CT26, and CH27 cells prepared using NETN lysis buffer. *Antibody:* Affinity purified rabbit anti-QRICH1 antibody (A304-934A lot 2) used for WB at 0.1 µg/ml. *Detection:* Chemiluminescence with an exposure time of 75 seconds.



Detection of human QRICH1 by western blot of immunoprecipitates. *Samples:* Whole cell lysate (1.0 mg per IP reaction; 20% of IP loaded) from HEK293T cells prepared using NETN lysis buffer. *Antibodies:* Affinity purified rabbit anti-QRICH1 antibody (A304-934A lot 2) used for IP at 6 µg per reaction. QRICH1 was also immunoprecipitated by a previous lot of this antibody (A304-934A lot 1) and a second antibody against a different epitope of QRICH1 (BL19396). For blotting immunoprecipitated QRICH1, A304-934A was used at 1 µg/ml. *Detection:* Chemiluminescence with an exposure time of 1 second.