

Septin 10/SEPT10 Antibody

Rabbit Polyclonal

Antigen Affinity Purified

Protein ID Q9P0V9.2

Catalog No. A304-916A

GeneID 151011

Lot No. A304-916A-1



APPLICATIONS	IP
SPECIES REACTIVITY	Human
AMOUNT	100 µl
CONCENTRATION	1000 µg/ml
STORAGE/SHELF LIFE	2 - 8° C / 1 year from date of receipt
PHYSICAL STATE	Liquid
BUFFER	Tris-citrate/phosphate buffer, pH 7 to 8 containing 0.09% Sodium Azide
ISOTYPE	IgG
ORIGIN	USA
PRODUCTION PROCEDURES	Antibody was affinity purified using an epitope specific to Septin 10/SEPT10 immobilized on solid support.

The epitope recognized by A304-916A maps to a region between residue 404 to 454 of human Septin-10 using the numbering given in entry Q9P0V9.2 (GeneID 151011).

Antibody concentration was determined by extinction coefficient: absorbance at 280 nm of 1.4 equals 1.0 mg of IgG.

APPLICATIONS Centrifuge tube to remove product from lid. Optimal working dilutions should be determined experimentally by the investigator. Prepare working dilution immediately before use.

Western Blot Not recommended. Use rabbit anti-Septin 10/SEPT10 antibody A304-915A.

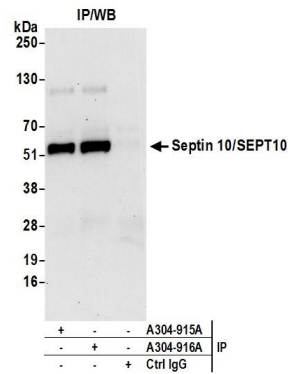
Immunoprecipitation 2 - 10 µg/mg lysate

APPLICATION NOTES Western blot of immunoprecipitates performed using Normal Pig Serum (Cat. No. S100-020), Goat anti-Rabbit Light Chain HRP Conjugate (Cat. No. A120-113P) and 4-20% SDS-PAGE (link to IP-western blot protocol in Additional Info section below).

ADDITIONAL INFO <https://www.bethyl.com/product/A304-916A>

Use the link above to view SDS, a current list of citations, and other product specific information. IP-western blot protocol: https://www.bethyl.com/content/protocol_IP_WB

This document certifies that this product has met all of the quality control standards defined by Bethyl Laboratories, Inc.
Eric McIntush, PhD | Chief Scientific Officer Date: June 21, 2019



Detection of human Septin 10/SEPT10 by western blot of immunoprecipitates. *Samples:* Whole cell lysate (0.5 or 1.0 mg per IP reaction; 20% of IP loaded) from HeLa cells prepared using NETN lysis buffer. *Antibodies:* Affinity purified rabbit anti-Septin 10/SEPT10 antibody A304-916A (lot A304-916A-1) used for IP at 6 µg per reaction. Septin 10/SEPT10 was also immunoprecipitated by rabbit anti-Septin 10/SEPT10 antibody A304-915A. For blotting immunoprecipitated Septin 10/SEPT10, A304-916A was used at 0.4 µg/ml. *Detection:* Chemiluminescence with an exposure time of 30 seconds.