

Formin-like 1 / FMNL1 Antibody

Rabbit Polyclonal

Antigen Affinity Purified Protein ID O95466.3

Catalog No. A304-869A GeneID 752

Lot No. A304-869A-1



APPLICATIONS	IP
SPECIES REACTIVITY	Human
AMOUNT	100 µl
CONCENTRATION	1000 µg/ml
STORAGE/SHELF LIFE	2 – 8° C / 1 year from date of receipt
PHYSICAL STATE	Liquid
BUFFER	Tris-citrate/phosphate buffer, pH 7 to 8 containing 0.09% Sodium Azide
ISOTYPE	IgG
ORIGIN	USA
PRODUCTION PROCEDURES	Antibody was affinity purified using an epitope specific to Formin-like 1 / FMNL1 immobilized on solid support.

The epitope recognized by A304-869A maps to a region between residue 1025 to 1075 of human Formin-like protein 1 using the numbering given in entry O95466.3 (GeneID 752).

Antibody concentration was determined by extinction coefficient: absorbance at 280 nm of 1.4 equals 1.0 mg of IgG.

APPLICATIONS Centrifuge tube to remove product from lid. Optimal working dilutions should be determined experimentally by the investigator. Prepare working dilution immediately before use.

Western Blot Not recommended. A304-869A has not performed satisfactorily when used for WB of Formin-like 1 / FMNL1 in crude preparations (e.g. whole cell lysate). This antibody can be used for WB of enriched (e.g. immunoprecipitated) sources of Formin-like 1 / FMNL1.

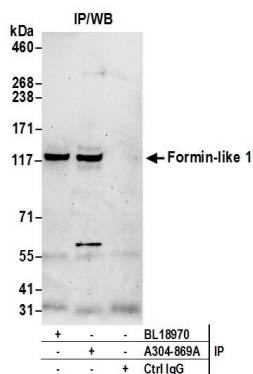
Immunoprecipitation 2 – 10 µg/mg lysate

APPLICATION NOTES Western blot of immunoprecipitates performed using Normal Pig Serum (Cat. No. S100-020), Goat anti-Rabbit Light Chain HRP Conjugate (Cat. No. A120-113P) and 4-8% SDS-PAGE (link to IP-western blot protocol in Additional Info section below).

ADDITIONAL INFO <https://www.bethyl.com/product/A304-869A>

Use the link above to view SDS, a current list of citations, and other product specific information. IP-western blot protocol: https://www.bethyl.com/content/protocol_IP_WB

This document certifies that this product has met all of the quality control standards defined by Bethyl Laboratories, Inc.
Eric McIntush, PhD | Chief Scientific Officer Date: June 21, 2019



Detection of human Formin-like 1 by western blot of immunoprecipitates. *Samples:* Whole cell lysate (0.5 or 1.0 mg per IP reaction; 20% of IP loaded) from HeLa cells prepared using NETN lysis buffer. *Antibody:* Affinity purified rabbit anti-Formin-like 1 antibody A304-869A (lot A304-869A-1) used for IP at 6 µg per reaction. Formin-like 1 was also immunoprecipitated by rabbit anti-Formin-like 1 antibody BL18970. For blotting immunoprecipitated Formin-like 1, A304-869A was used at 1 µg/ml. *Detection:* Chemiluminescence with an exposure time of 3 minutes.