

AJUBA/JUB Antibody

Rabbit Polyclonal

Antigen Affinity Purified

Protein ID Q96IF1.1

Catalog No. A304-867A

GeneID 84962

Lot No. A304-867A-1



APPLICATIONS WB, IP

SPECIES REACTIVITY Human

AMOUNT 100 µl

CONCENTRATION 1000 µg/ml

STORAGE/SHELF LIFE 2 – 8° C / 1 year from date of receipt

PHYSICAL STATE Liquid

BUFFER Tris-citrate/phosphate buffer, pH 7 to 8 containing 0.09% Sodium Azide

ISOTYPE IgG

ORIGIN USA

PRODUCTION PROCEDURES Antibody was affinity purified using an epitope specific to AJUBA/JUB immobilized on solid support.

The epitope recognized by A304-867A maps to a region between residue 75 to 125 of human Protein ajuba using the numbering given in entry Q96IF1.1 (GeneID 84962).

Antibody concentration was determined by extinction coefficient: absorbance at 280 nm of 1.4 equals 1.0 mg of IgG.

APPLICATIONS Centrifuge tube to remove product from lid. Optimal working dilutions should be determined experimentally by the investigator. Prepare working dilution immediately before use.

Western Blot 1:500 – 1:2,500

Immunoprecipitation 2 – 10 µg/mg lysate

APPLICATION NOTES Western blot of immunoprecipitates performed using Normal Pig Serum (Cat. No. S100-020), Goat anti-Rabbit Light Chain HRP Conjugate (Cat. No. A120-113P) and 4-20% SDS-PAGE (link to IP-western blot protocol in Additional Info section below).

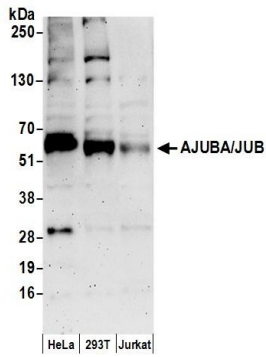
Western blot of lysates performed using standard western blot reagents and 4-20% SDS-PAGE.

ADDITIONAL INFO <https://www.bethyl.com/product/A304-867A>

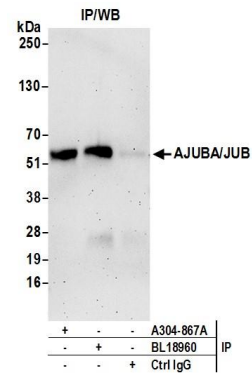
Use the link above to view SDS, a current list of citations, and other product specific information.

IP-western blot protocol: https://www.bethyl.com/content/protocol_IP_WB

This document certifies that this product has met all of the quality control standards defined by Bethyl Laboratories, Inc.
Eric McIntush, PhD | Chief Scientific Officer Date: June 21, 2019



Detection of human AJUBA/JUB by western blot. *Samples:* Whole cell lysate (50 μ g) from HeLa, HEK293T, and Jurkat cells prepared using NETN lysis buffer. *Antibody:* Affinity purified rabbit anti-AJUBA/JUB antibody A304-867A (lot A304-867A-1) used for WB at 1 μ g/ml. *Detection:* Chemiluminescence with an exposure time of 3 minutes.



Detection of human AJUBA/JUB by western blot of immunoprecipitates. *Samples:* Whole cell lysate (0.5 or 1.0 mg per IP reaction; 20% of IP loaded) from HeLa cells prepared using NETN lysis buffer. *Antibodies:* Affinity purified rabbit anti-AJUBA/JUB antibody A304-867A (lot A304-867A-1) used for IP at 6 μ g per reaction. AJUBA/JUB was also immunoprecipitated by rabbit anti-AJUBA/JUB antibody BL18960. For blotting immunoprecipitated AJUBA/JUB, A304-867A was used at 1 μ g/ml. *Detection:* Chemiluminescence with an exposure time of 3 minutes.