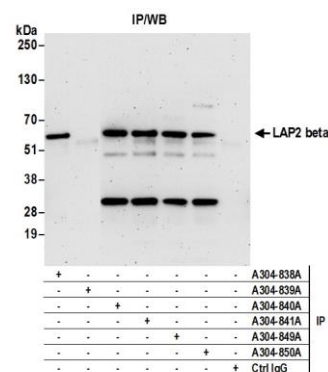
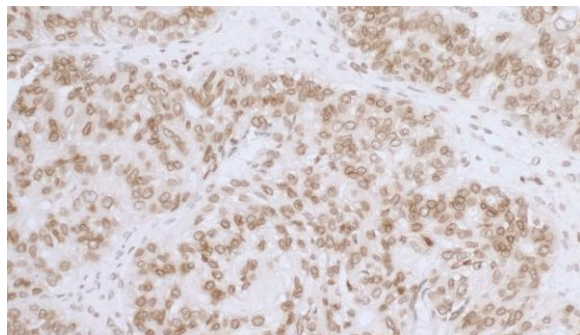


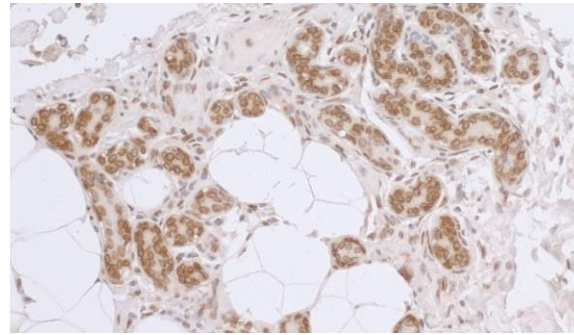
Detection of human LAP2 beta by western blot. *Samples:* Whole cell lysate (50 µg) from HeLa, HEK293T, and Jurkat cells prepared using NETN lysis buffer. *Antibody:* Affinity purified rabbit anti-LAP2 beta gamma antibody A304-850A (lot A304-850A-1) used for WB at 1 µg/ml. *Detection:* Chemiluminescence with an exposure time of 30 seconds.



Detection of human LAP2 beta by western blot of immunoprecipitates. *Samples:* Whole cell lysate (0.5 or 1.0 mg per IP reaction; 20% of IP loaded) from 293T cells prepared using NETN lysis buffer. *Antibody:* Affinity purified rabbit anti-LAP2 beta gamma antibody A304-850A (lot A304-850A-1) used for IP at 6 µg per reaction. LAP2 beta was also immunoprecipitated by rabbit anti-LAP2 alpha beta gamma antibody A304-838A, rabbit anti-LAP2 beta antibodies A304-840A and A304-841A, and rabbit anti-LAP2 beta gamma antibody A304-849A. For blotting immunoprecipitated LAP2 beta, A304-850A was used at 1 µg/ml. *Detection:* Chemiluminescence with an exposure time of 3 minutes.



Detection of human LAP2 beta gamma /TMPO by immunohistochemistry. *Sample:* FFPE section of human ovarian carcinoma. *Antibody:* Affinity purified rabbit anti-LAP2 beta gamma/TMPO (Cat. No. A304-850A Lot1) used at a dilution of 1:5,000 (0.2µg/ml). *Detection:* DAB



Detection of human LAP2 beta gamma /TMPO by immunohistochemistry. *Sample:* FFPE section of human breast carcinoma. *Antibody:* Affinity purified rabbit anti-LAP2 beta gamma/TMPO (Cat. No. A304-850A Lot1) used at a dilution of 1:5,000 (0.2µg/ml). *Detection:* DAB

