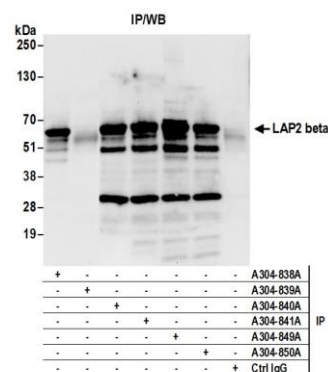
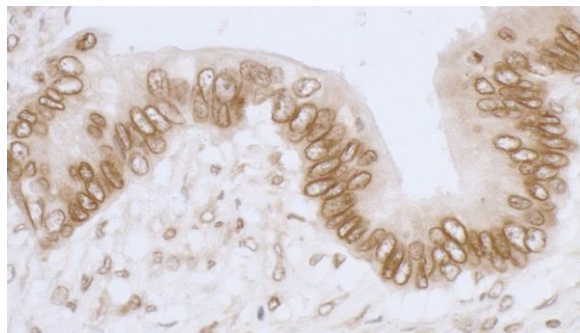


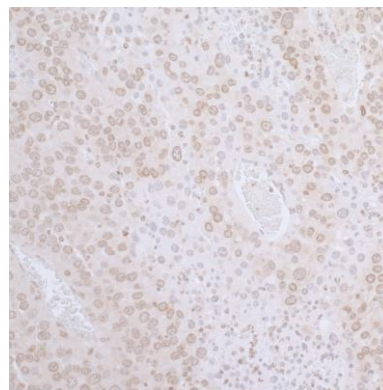
**Detection of human LAP2 beta by western blot.** *Samples:* Whole cell lysate (50 µg) from HeLa, HEK293T, and Jurkat cells prepared using NETN lysis buffer. *Antibody:* Affinity purified rabbit anti-LAP2 beta gamma antibody A304-841A (lot A304-841A-1) used for WB at 0.1 µg/ml. *Detection:* Chemiluminescence with an exposure time of 30 seconds.



**Detection of human LAP2 beta by western blot of immunoprecipitates.** *Samples:* Whole cell lysate (0.5 or 1.0 mg per IP reaction; 20% of IP loaded) from 293T cells prepared using NETN lysis buffer. *Antibody:* Affinity purified rabbit anti-LAP2 beta gamma antibody A304-849A (lot A304-849A-1) used for IP at 6 µg per reaction. LAP2 beta was also immunoprecipitated by rabbit anti-LAP2 alpha beta gamma antibody A304-838A, rabbit anti-LAP2 beta antibodies A304-840A and A304-841A, and rabbit anti-LAP2 beta gamma antibody A304-850A. For blotting immunoprecipitated LAP2 beta, A304-849A was used at 1 µg/ml. *Detection:* Chemiluminescence with an exposure time of 10 seconds.



**Detection of human LAP2 beta gamma /TMPO by immunohistochemistry.** *Sample:* FFPE section of human colon carcinoma. *Antibody:* Affinity purified rabbit anti-LAP2 beta gamma/TMPO (Cat. No. A304-849A Lot1) used at a dilution of 1:1,000 (1 µg/ml). *Detection:* DAB



**Detection of mouse LAP2 beta gamma /TMPO by immunohistochemistry.** *Sample:* FFPE section of mouse renal cell carcinoma. *Antibody:* Affinity purified rabbit anti-LAP2 beta gamma/TMPO (Cat. No. A304-849A Lot1) used at a dilution of 1:1,000 (1 µg/ml). *Detection:* DAB

