

POLR1D Antibody

Rabbit Polyclonal

Antigen Affinity Purified

Protein ID Q9Y2S0.1

Catalog No. A304-847A

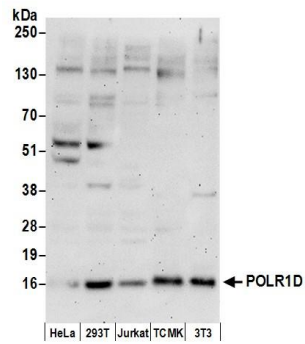
GeneID 51082

Lot No. A304-847A-1



APPLICATIONS	WB
SPECIES REACTIVITY	Human, Mouse
AMOUNT	100 µl
CONCENTRATION	1000 µg/ml
STORAGE/SHELF LIFE	2 - 8° C / 1 year from date of receipt
PHYSICAL STATE	Liquid
BUFFER	Tris-citrate/phosphate buffer, pH 7 to 8 containing 0.09% Sodium Azide
ISOTYPE	IgG
ORIGIN	USA
PRODUCTION PROCEDURES	<p>Antibody was affinity purified using an epitope specific to POLR1D immobilized on solid support.</p> <p>The epitope recognized by A304-847A maps to a region between residue 1 to 50 of human DNA-directed RNA polymerases I and III subunit RPAC2 using the numbering given in entry Q9Y2S0.1 (GeneID 51082).</p> <p>Antibody concentration was determined by extinction coefficient: absorbance at 280 nm of 1.4 equals 1.0 mg of IgG.</p>
APPLICATIONS	<p>Centrifuge tube to remove product from lid. Optimal working dilutions should be determined experimentally by the investigator. Prepare working dilution immediately before use.</p> <p>Western Blot 1:500 - 1:2,500</p> <p>Immunoprecipitation Not recommended</p>
APPLICATION NOTES	Western blot of lysates performed using standard western blot reagents and 4-12% SDS-PAGE.
ADDITIONAL INFO	<p>https://www.bethyl.com/product/A304-847A</p> <p>Use the link above to view SDS, a current list of citations, and other product specific information.</p>

This document certifies that this product has met all of the quality control standards defined by Bethyl Laboratories, Inc.
Eric McIntush, PhD | Chief Scientific Officer Date: June 21, 2019



Detection of human and mouse POLR1D by western blot.
Samples: Whole cell lysate (50 μ g) from HeLa, HEK293T, Jurkat, mouse TCMK-1, and mouse NIH 3T3 cells prepared using NETN lysis buffer. *Antibody:* Affinity purified rabbit anti-POLR1D antibody A304-847A (lot A304-847A-1) used for WB at 1 μ g/ml. *Detection:* Chemiluminescence with an exposure time of 3 minutes.