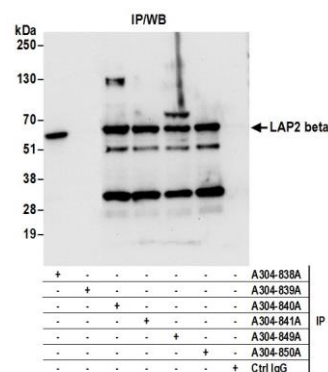
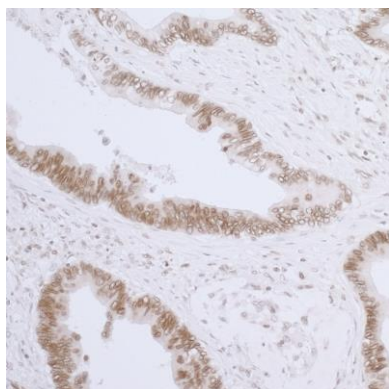


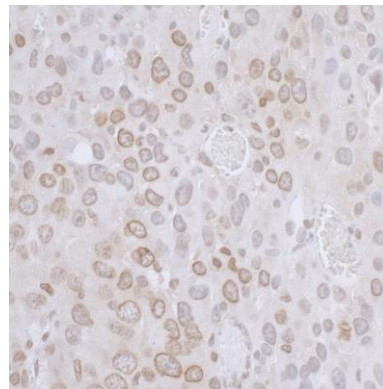
Detection of human LAP2 beta by western blot. *Samples:* Whole cell lysate (50 µg) from HeLa, HEK293T, and Jurkat cells prepared using NETN lysis buffer. *Antibody:* Affinity purified rabbit anti-LAP2 beta antibody A304-840A (lot A304-840A-1) used for WB at 0.4 µg/ml. *Detection:* Chemiluminescence with an exposure time of 30 seconds.



Detection of human LAP2 beta by western blot of immunoprecipitates. *Samples:* Whole cell lysate (0.5 or 1.0 mg per IP reaction; 20% of IP loaded) from 293T cells prepared using NETN lysis buffer. *Antibodies:* Affinity purified rabbit anti-LAP2 beta antibody A304-840A (lot A304-840A-1) used for IP at 6 µg per reaction. LAP2 beta was also immunoprecipitated by rabbit anti-LAP2 alpha beta gamma antibody A304-838A, rabbit anti-LAP2 beta antibody A304-841A and rabbit anti-LAP2 beta gamma antibodies A304-849A and A304-850A. LAP2 beta was not immunoprecipitated by rabbit anti-LAP2 alpha antibody A304-839A. For blotting immunoprecipitated LAP2 beta, A304-840A was used at 1 µg/ml. *Detection:* Chemiluminescence with an exposure time of 10 seconds.



Detection of human LAP2 beta/TMPO by immunohistochemistry. *Sample:* FFPE section of human colon carcinoma. *Antibody:* Affinity purified rabbit anti-LAP2 beta /TMPO (Cat. No. A304-840A Lot1) used at a dilution of 1:1,000 (1 µg/ml). *Detection:* DAB



Detection of mouse LAP2 beta/TMPO by immunohistochemistry. *Sample:* FFPE section of mouse renal cell carcinoma. *Antibody:* Affinity purified rabbit anti-LAP2 beta /TMPO (Cat. No. A304-840A Lot1) used at a dilution of 1:1,000 (1 µg/ml). *Detection:* DAB