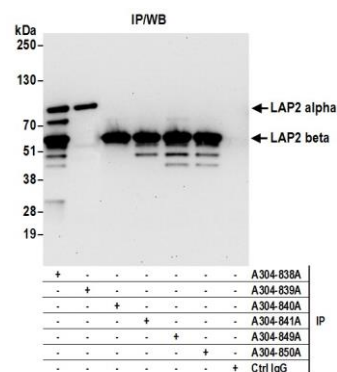
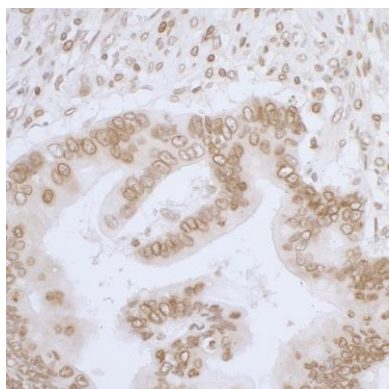


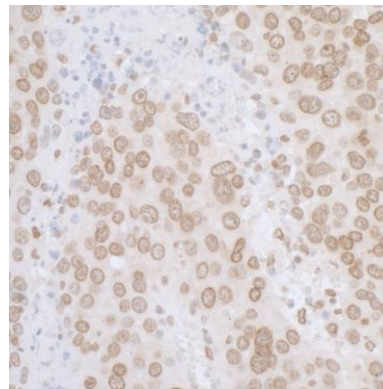
Detection of human LAP2 alpha and LAP2 beta by western blot. *Samples:* Whole cell lysate (50 µg) from HeLa, HEK293T, and Jurkat cells prepared using NETN lysis buffer. *Antibody:* Affinity purified rabbit anti-LAP2 alpha beta gamma antibody A304-838A (lot A304-838A-1) used for WB at 0.1 µg/ml. *Detection:* Chemiluminescence with an exposure time of 30 seconds.



Detection of human LAP2 alpha and beta by western blot of immunoprecipitates. *Samples:* Whole cell lysate (0.5 or 1.0 mg per IP reaction; 20% of IP loaded) from 293T cells prepared using NETN lysis buffer. *Antibodies:* Affinity purified rabbit anti-LAP2 alpha beta gamma antibody A304-838A (lot A304-838A-1) used for IP at 6 µg per reaction. LAP2 alpha was also immunoprecipitated by rabbit anti-LAP2 alpha antibody A304-839A. LAP2 beta was immunoprecipitated by rabbit anti-LAP2 beta antibodies A304-840A and A304-841A, and by rabbit anti-LAP2 beta gamma antibodies A304-849A and A304-850A. For blotting immunoprecipitated LAP2 alpha and beta, A304-838A was used at 1 µg/ml. *Detection:* Chemiluminescence with an exposure time of 30 seconds.



Detection of human LAP2 alpha beta gamma/TMPO by immunohistochemistry. *Sample:* FFPE section of human colon carcinoma. *Antibody:* Affinity purified rabbit anti-LAP2 alpha beta gamma/TMPO (Cat. No. A304-838A Lot1) used at a dilution of 1:5,000 (0.2 µg/ml). *Detection:* DAB



Detection of mouse LAP2 alpha beta gamma/TMPO by immunohistochemistry. *Sample:* FFPE section of mouse plasmacytoma. *Antibody:* Affinity purified rabbit anti-LAP2 alpha beta gamma/TMPO (Cat. No. A304-838A Lot1) used at a dilution of 1:5,000 (0.2 µg/ml). *Detection:* DAB