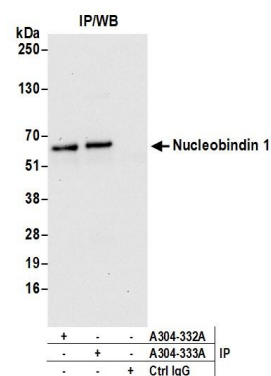


Detection of human Nucleobindin 1 by western blot.

Samples: Whole cell lysate (50 µg) from HeLa, HEK293T, and Jurkat cells prepared using NETN lysis buffer.

Antibody: Affinity purified rabbit anti-Nucleobindin 1 antibody A304-833A (lot A304-833A-1) used for WB at 0.1 µg/ml. **Detection:** Chemiluminescence with an exposure time of 30 seconds.



Detection of human Nucleobindin 1 by western blot of immunoprecipitates.

Samples: Whole cell lysate (0.5 or 1.0 mg per IP reaction; 20% of IP loaded) from 293T cells prepared using NETN lysis buffer. **Antibodies:** Affinity purified rabbit anti-Nucleobindin 1 antibody A304-833A (lot A304-833A-1) used for IP at 6 µg per reaction. Nucleobindin 1 was also immunoprecipitated by rabbit anti-Nucleobindin 1 antibody A304-332A. For blotting immunoprecipitated Nucleobindin 1, A304-833A was used at 1 µg/ml. **Detection:** Chemiluminescence with an exposure time of 30 seconds.