

CD2BP2 Antibody

Rabbit Polyclonal

Antigen Affinity Purified

Protein ID O95400.1

Catalog No. A304-827A

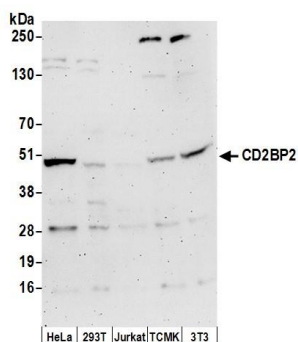
GeneID 10421

Lot No. A304-827A-1

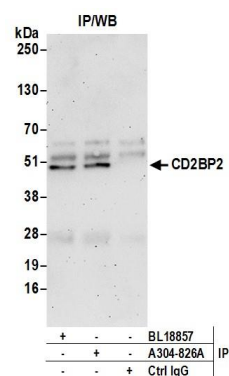


APPLICATIONS	WB
SPECIES REACTIVITY	Human, Mouse
AMOUNT	100 µl
CONCENTRATION	1000 µg/ml
STORAGE/SHELF LIFE	2 - 8° C / 1 year from date of receipt
PHYSICAL STATE	Liquid
BUFFER	Tris-citrate/phosphate buffer, pH 7 to 8 containing 0.09% Sodium Azide
ISOTYPE	IgG
ORIGIN	USA
PRODUCTION PROCEDURES	<p>Antibody was affinity purified using an epitope specific to CD2BP2 immobilized on solid support.</p> <p>The epitope recognized by A304-827A maps to a region between residue 275 to 325 of human CD2 antigen cytoplasmic tail-binding protein 2 using the numbering given in entry O95400.1 (GeneID 10421).</p> <p>Antibody concentration was determined by extinction coefficient: absorbance at 280 nm of 1.4 equals 1.0 mg of IgG.</p>
APPLICATIONS	<p>Centrifuge tube to remove product from lid. Optimal working dilutions should be determined experimentally by the investigator. Prepare working dilution immediately before use.</p> <p>Western Blot 1:1,000 - 1:5,000</p> <p>Immunoprecipitation Not recommended</p>
APPLICATION NOTES	Western blot of lysates performed using standard western blot reagents and 4-20% SDS-PAGE.
ADDITIONAL INFO	<p>https://www.bethyl.com/product/A304-827A</p> <p>Use the link above to view SDS, a current list of citations, and other product specific information.</p>

This document certifies that this product has met all of the quality control standards defined by Bethyl Laboratories, Inc.
Eric McIntush, PhD | Chief Scientific Officer Date: June 21, 2019



Detection of human and mouse CD2BP2 by western blot.
Samples: Whole cell lysate (50 µg) from HeLa, HEK293T, Jurkat, mouse TCMK-1, and mouse NIH 3T3 cells prepared using NETN lysis buffer. *Antibody:* Affinity purified rabbit anti-CD2BP2 antibody A304-827A (lot A304-827A-1) used for WB at 0.4 µg/ml. *Detection:* Chemiluminescence with an exposure time of 3 minutes.



Detection of human CD2BP2 by western blot of immunoprecipitates.
Samples: Whole cell lysate (0.5 or 1.0 mg per IP reaction; 20% of IP loaded) from 293T cells prepared using NETN lysis buffer. *Antibody:* Affinity purified rabbit anti-CD2BP2 antibody A304-826A and BL18857 were used for IP at 6 µg per reaction. For blotting immunoprecipitated CD2BP2, A304-827A was used at 1 µg/ml. *Detection:* Chemiluminescence with an exposure time of 3 minutes.