

GEMIN2 Antibody

Rabbit Polyclonal

Antigen Affinity Purified

Protein ID O14893.1

Catalog No. A304-820A

GeneID 8487

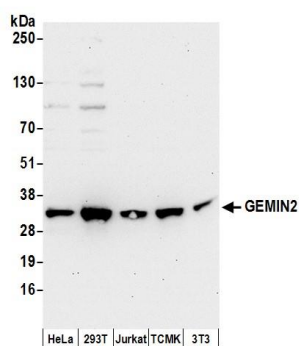
Lot No. A304-820A-1



| | |
|------------------------------|---|
| APPLICATIONS | WB, IP |
| SPECIES REACTIVITY | Human, Mouse |
| PRESUMED REACTIVITY | Based on 100% sequence identity, this antibody is predicted to react with Rat and X. laevis |
| AMOUNT | 100 µl |
| CONCENTRATION | 1000 µg/ml |
| STORAGE/SHELF LIFE | 2 - 8° C / 1 year from date of receipt |
| PHYSICAL STATE | Liquid |
| BUFFER | Tris-citrate/phosphate buffer, pH 7 to 8 containing 0.09% Sodium Azide |
| ISOTYPE | IgG |
| ORIGIN | USA |
| PRODUCTION PROCEDURES | <p>Antibody was affinity purified using an epitope specific to GEMIN2 immobilized on solid support.</p> <p>The epitope recognized by A304-820A maps to a region between residue 25 to 75 of human Gem (Nuclear Organelle) Associated Protein 2 using the numbering given in entry O14893.1 (GeneID 8487).</p> <p>Antibody concentration was determined by extinction coefficient: absorbance at 280 nm of 1.4 equals 1.0 mg of IgG.</p> |
| APPLICATIONS | <p>Centrifuge tube to remove product from lid. Optimal working dilutions should be determined experimentally by the investigator. Prepare working dilution immediately before use.</p> <p>Western Blot 1:2,000 - 1:10,000</p> <p>Immunoprecipitation 2 - 10 µg/mg lysate</p> |
| APPLICATION NOTES | <p>Western blot of immunoprecipitates performed using Normal Pig Serum (Cat. No. S100-020), Goat anti-Rabbit Light Chain HRP Conjugate (Cat. No. A120-113P) and 4-20% SDS-PAGE (link to IP-western blot protocol in Additional Info section below).</p> <p>Western blot of lysates performed using standard western blot reagents and 4-20% SDS-PAGE.</p> |
| ADDITIONAL INFO | <p>https://www.bethyl.com/product/A304-820A</p> <p>Use the link above to view SDS, a current list of citations, and other product specific information.</p> <p>IP-western blot protocol: https://www.bethyl.com/content/protocol_IP_WB</p> |

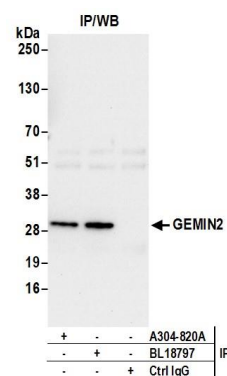
This document certifies that this product has met all of the quality control standards defined by Bethyl Laboratories, Inc.
Eric McIntush, PhD | Chief Scientific Officer

Date: June 21, 2019



Detection of human and mouse GEMIN2 by western blot.

Samples: Whole cell lysate (50 µg) from HeLa, HEK293T, Jurkat, mouse TCMK-1, and mouse NIH 3T3 cells prepared using NETN lysis buffer. **Antibody:** Affinity purified rabbit anti-GEMIN2 antibody A304-820A (lot A304-820A-1) used for WB at 0.1 µg/ml. **Detection:** Chemiluminescence with an exposure time of 30 seconds.



Detection of human GEMIN2 by western blot of immunoprecipitates.

Samples: Whole cell lysate (0.5 or 1.0 mg per IP reaction; 20% of IP loaded) from 293T cells prepared using NETN lysis buffer. **Antibodies:** Affinity purified rabbit anti-GEMIN2 antibody A304-820A (lot A304-820A-1) used for IP at 6 µg per reaction. GEMIN2 was also immunoprecipitated by rabbit anti-GEMIN2 antibody BL18797. For blotting immunoprecipitated GEMIN2, A304-820A was used at 0.4 µg/ml. **Detection:** Chemiluminescence with an exposure time of 10 seconds.