

Importin 11/IPO11 Antibody

Rabbit Polyclonal

Antigen Affinity Purified	RefSeq ID	NP_057422.3
Catalog No. A304-811A	Uniprot ID	Q9UI26
Lot No. 2	GenelD	51194

APPLICATIONS	WB, IP
SPECIES REACTIVITY	Human, Mouse
AMOUNT	100 µl
CONCENTRATION	1000 µg/ml
STORAGE/SHELF LIFE	2 – 8°C / 1 year from date of receipt
PHYSICAL STATE	Liquid
BUFFER	Tris-citrate/phosphate buffer, pH 7 to 8 containing 0.09% Sodium Azide
ISOTYPE	IgG
ORIGIN	USA
PRODUCTION PROCEDURES	Antibody was affinity purified using an epitope specific to Importin 11/IPO11 immobilized on solid support.

The epitope recognized by A304-811A maps to a region between residue 925 to 975 of human Importin-11 using the numbering given in entry Q9UI26.1 (GenelD 51194).

Immunoglobulin concentration was determined using Beer's Law where 1 mg/mL IgG has an A280 of 1.4.

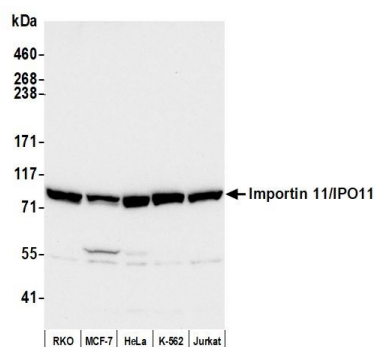
APPLICATIONS Centrifuge tube to remove product from lid. Optimal working dilutions should be determined experimentally by the investigator. Prepare working dilution immediately before use.

Western Blot	1:2000 – 1:10,000
Immunoprecipitation	6 µg/mg lysate

ADDITIONAL INFO <https://www.fortislife.com/p/A304-811A>

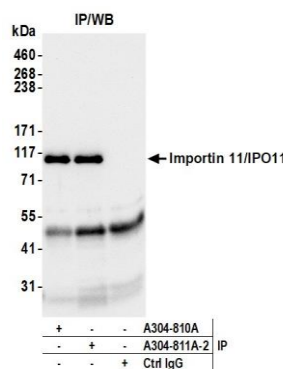
Use the link above to view SDS, a current list of citations, and other product specific information.

This document certifies that this product has met all of the quality control standards defined by Bethyl Laboratories, Inc.
Michael Spencer, PhD Date: July 25, 2024



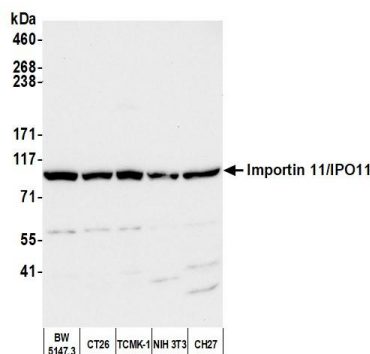
Detection of human Importin 11/IPO11 by western blot.

Samples: Whole cell lysate (50 µg) from RKO, MCF-7, HeLa, K-562, and Jurkat cells prepared using NETN lysis buffer. *Antibody:* Affinity purified rabbit anti-Importin 11/IPO11 antibody (A304-811A) used for WB at 0.4 µg/ml. *Detection:* Chemiluminescence with an exposure time of 30 seconds.



Detection of human Importin 11/IPO11 by western blot of immunoprecipitates.

Samples: Whole cell lysate (1.0 mg per IP reaction; 20% of IP loaded) from RKO cells prepared using NETN lysis buffer. *Antibodies:* Affinity purified rabbit anti-Importin 11/IPO11 antibody (A304-811A) used for IP at 6 µg per reaction. Importin 11/IPO11 was also immunoprecipitated by a second antibody against a different epitope of Importin 11/IPO11 (A304-810A). For blotting immunoprecipitated Importin 11/IPO11, A304-811A was used at 1 µg/ml. *Detection:* Chemiluminescence with an exposure time of 30 seconds.



Detection of mouse Importin 11/IPO11 by western blot.

Samples: Whole cell lysate (50 µg) from BW5147.3, CT26, TCMK-1, NIH 3T3, and CH27 cells prepared using NETN lysis buffer. *Antibody:* Affinity purified rabbit anti-Importin 11/IPO11 antibody (A304-811A) used for WB at 0.4 µg/ml. *Detection:* Chemiluminescence with an exposure time of 30 seconds.