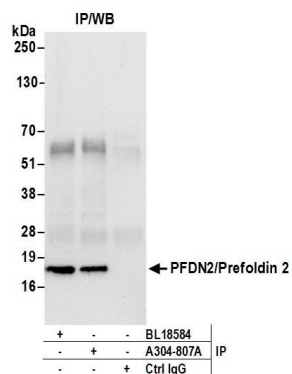


Detection of human and mouse PFDN2/Prefoldin 2 by western blot. *Samples:* Whole cell lysate (50 µg) from HeLa, HEK293T, Jurkat, mouse TCMK-1, and mouse NIH 3T3 cells prepared using NETN lysis buffer. *Antibody:* Affinity purified rabbit anti-PFDN2/Prefoldin 2 antibody A304-807A (lot A304-807A-1) used for WB at 0.1 µg/ml. *Detection:* Chemiluminescence with an exposure time of 10 seconds.



Detection of human PFDN2/Prefoldin 2 by western blot of immunoprecipitates. *Samples:* Whole cell lysate (0.5 or 1.0 mg per IP reaction; 20% of IP loaded) from 293T cells prepared using NETN lysis buffer. *Antibodies:* Affinity purified rabbit anti-PFDN2/Prefoldin 2 antibody A304-807A (lot A304-807A-1) used for IP at 6 µg per reaction. PFDN2/Prefoldin 2 was also immunoprecipitated by rabbit anti-PFDN2/Prefoldin 2 antibody BL18584. For blotting immunoprecipitated PFDN2/Prefoldin 2, A304-807A was used at 0.4 µg/ml. *Detection:* Chemiluminescence with an exposure time of 10 seconds.