

# ALDH1 8A1 /P5CS Antibody

Rabbit Polyclonal

Antigen Affinity Purified

Protein ID P54886.2

Catalog No. A304-803A

GeneID 5832

Lot No. A304-803A-1



<b>APPLICATIONS</b>	WB, IP
<b>SPECIES REACTIVITY</b>	Human
<b>PRESUMED REACTIVITY</b>	Based on 100% sequence identity, this antibody is predicted to react with Orangutan
<b>AMOUNT</b>	100 µl
<b>CONCENTRATION</b>	1000 µg/ml
<b>STORAGE/SHELF LIFE</b>	2 – 8° C / 1 year from date of receipt
<b>PHYSICAL STATE</b>	Liquid
<b>BUFFER</b>	Tris-citrate/phosphate buffer, pH 7 to 8 containing 0.09% Sodium Azide
<b>ISOTYPE</b>	IgG
<b>ORIGIN</b>	USA
<b>PRODUCTION PROCEDURES</b>	Antibody was affinity purified using an epitope specific to ALDH1 8A1 /P5CS immobilized on solid support.

The epitope recognized by A304-803A maps to a region between residue 745 to 795 of human Aldehyde Dehydrogenase 18 Family, Member A1 using the numbering given in entry P54886.2 (GeneID 5832).

Antibody concentration was determined by extinction coefficient: absorbance at 280 nm of 1.4 equals 1.0 mg of IgG.

**APPLICATIONS** Centrifuge tube to remove product from lid. Optimal working dilutions should be determined experimentally by the investigator. Prepare working dilution immediately before use.

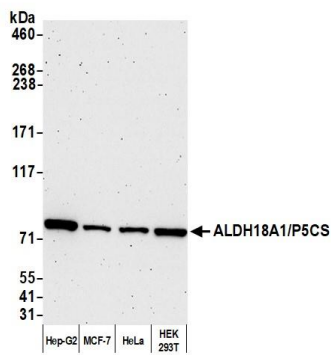
Western Blot 1:10,000–1:25,000

Immunoprecipitation 2 – 10 µg/mg lysate

**ADDITIONAL INFO** <https://www.bethyl.com/product/A304-803A>

Use the link above to view SDS, a current list of citations, and other product specific information.  
IP-western blot protocol: [https://www.bethyl.com/content/protocol\\_IP\\_WB](https://www.bethyl.com/content/protocol_IP_WB)

This document certifies that this product has met all of the quality control standards defined by Bethyl Laboratories, Inc.  
Eric McIntush, PhD | Chief Scientific Officer Date: July 14, 2020

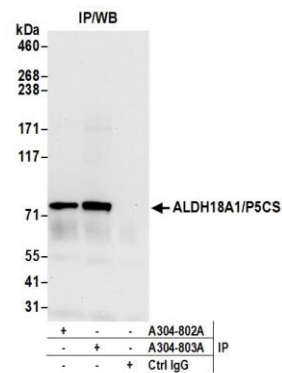


**Detection of human ALDH18A1/P5CS by western blot.**

*Samples:* Whole cell lysate (10 µg) from Hep-G2, MCF-7, HeLa, and HEK293T cells prepared using NETN lysis buffer.

*Antibody:* Affinity purified rabbit anti-ALDH18A1/P5CS antibody A304-803A Lot 1 used for WB at 0.04 µg/ml.

*Detection:* Chemiluminescence with an exposure time of 3 minutes.



**Detection of human ALDH18A1/P5CS by western blot of immunoprecipitates.**

*Samples:* Whole cell lysate (0.5 or 1.0 mg per IP reaction; 20% of IP loaded) from 293T cells prepared using NETN lysis buffer. *Antibody:* Affinity purified rabbit anti-ALDH18A1/P5CS antibody A304-803A (lot A304-803A-1) used for IP at 6 µg per reaction.

ALDH18A1/P5CS was also immunoprecipitated by rabbit anti-ALDH18A1/P5CS antibody A304-802A. For blotting immunoprecipitated ALDH18A1/P5CS, A304-803A was used at 0.4 µg/ml. *Detection:* Chemiluminescence with an exposure time of 10 seconds.