

ALDH1 8A1 /P5CS Antibody

Rabbit Polyclonal

Antigen Affinity Purified

Protein ID P54886.2

Catalog No. A304-802A

GeneID 5832

Lot No. A304-802A-1



APPLICATIONS	WB, IP
SPECIES REACTIVITY	Human, Mouse
PRESUMED REACTIVITY	Based on 100% sequence identity, this antibody is predicted to react with Orangutan
AMOUNT	100 µl
CONCENTRATION	1000 µg/ml
STORAGE/SHELF LIFE	2 – 8° C / 1 year from date of receipt
PHYSICAL STATE	Liquid
BUFFER	Tris-citrate/phosphate buffer, pH 7 to 8 containing 0.09% Sodium Azide
ISOTYPE	IgG
ORIGIN	USA
PRODUCTION PROCEDURES	Antibody was affinity purified using an epitope specific to ALDH1 8A1 /P5CS immobilized on solid support.

The epitope recognized by A304-802A maps to a region between residue 575 to 625 of human Aldehyde Dehydrogenase 18 Family, Member A1 using the numbering given in entry P54886.2 (GeneID 5832).

Antibody concentration was determined by extinction coefficient: absorbance at 280 nm of 1.4 equals 1.0 mg of IgG.

APPLICATIONS Centrifuge tube to remove product from lid. Optimal working dilutions should be determined experimentally by the investigator. Prepare working dilution immediately before use.

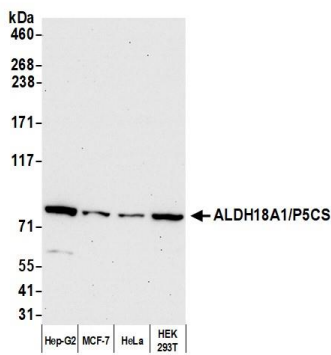
Western Blot 1:10,000 – 1:25,000

Immunoprecipitation 2 – 10 µg/mg lysate

ADDITIONAL INFO <https://www.bethyl.com/product/A304-802A>

Use the link above to view SDS, a current list of citations, and other product specific information.
IP-western blot protocol: https://www.bethyl.com/content/protocol_IP_WB

This document certifies that this product has met all of the quality control standards defined by Bethyl Laboratories, Inc.
Eric McIntush, PhD | Chief Scientific Officer Date: July 9, 2020

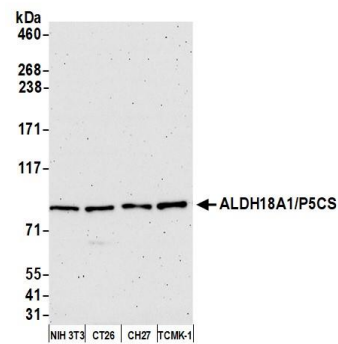


Detection of human ALDH18A1/P5CS by western blot.

Samples: Whole cell lysate (10 µg) from Hep-G2, MCF-7, HeLa, and HEK293T cells prepared using NETN lysis buffer.

Antibody: Affinity purified rabbit anti-ALDH18A1/P5CS antibody A304-802A Lot 1 used for WB at 0.1 µg/ml.

Detection: Chemiluminescence with an exposure time of 30 seconds.

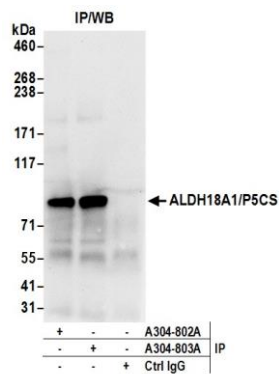


Detection of mouse ALDH18A1/P5CS by western blot.

Samples: Whole cell lysate (10 µg) from NIH 3T3, CT26, CH27, and TCMK-1 cells prepared using NETN lysis buffer.

Antibody: Affinity purified rabbit anti-ALDH18A1/P5CS antibody A304-802A Lot 1 used for WB at 0.04 µg/ml.

Detection: Chemiluminescence with an exposure time of 30 seconds.



Detection of human ALDH18A1/P5CS by western blot of immunoprecipitates. *Samples:* Whole cell lysate (0.5 or 1.0 mg per IP reaction; 20% of IP loaded) from 293T cells prepared using NETN lysis buffer. *Antibodies:* Affinity purified rabbit anti-ALDH18A1/P5CS antibody A304-802A (lot A304-802A-1) used for IP at 6 µg per reaction. ALDH18A1/P5CS was also immunoprecipitated by rabbit anti-ALDH18A1/P5CS antibody A304-803A. For blotting immunoprecipitated ALDH18A1/P5CS, A304-802A was used at 0.4 µg/ml. *Detection:* Chemiluminescence with an exposure time of 10 seconds.