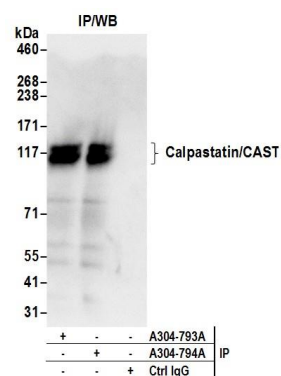


#### Detection of human Calpastatin/CAST by western blot.

**Samples:** Whole cell lysate (50 µg) from HeLa and 293T cells prepared using NETN lysis buffer. **Antibody:** Affinity purified rabbit anti-Calpastatin/CAST antibody A304-793A (lot A304-793A-1) used for WB at 0.1 µg/ml. **Detection:** Chemiluminescence with an exposure time of 10 seconds.



#### Detection of human Calpastatin/CAST by western blot of immunoprecipitates.

**Samples:** Whole cell lysate (0.5 or 1.0 mg per IP reaction; 20% of IP loaded) from 293T cells prepared using NETN lysis buffer. **Antibodies:** Affinity purified rabbit anti-Calpastatin/CAST antibody A304-793A (lot A304-793A-1) used for IP at 6 µg per reaction. Calpastatin/CAST was also immunoprecipitated by rabbit anti-Calpastatin/CAST antibody A304-794A. For blotting immunoprecipitated Calpastatin/CAST, A304-794A was used at 1 µg/ml. **Detection:** Chemiluminescence with an exposure time of 3 seconds.