

Thioredoxin Reductase 1 /TXNRD1 /TRXR1 Antibody

Rabbit Polyclonal

Antigen Affinity Purified

Protein ID Q16881

Catalog No. A304-791A

GeneID 7296

Lot No. A304-791A-1



APPLICATIONS WB, IP

SPECIES REACTIVITY Human

AMOUNT 100 µl

CONCENTRATION 1000 µg/ml

STORAGE/SHELF LIFE 2 - 8° C / 1 year from date of receipt

PHYSICAL STATE Liquid

BUFFER Tris-citrate/phosphate buffer, pH 7 to 8 containing 0.09% Sodium Azide

ISOTYPE IgG

ORIGIN USA

PRODUCTION PROCEDURES Antibody was affinity purified using an epitope specific to Thioredoxin Reductase 1/TXNRD1/TRXR1 immobilized on solid support.

The epitope recognized by A304-791A maps to a region between residue 125 to 175 of human Thioredoxin reductase 1 using the numbering given in entry Q16881 (GeneID 7296).

Antibody concentration was determined by extinction coefficient: absorbance at 280 nm of 1.4 equals 1.0 mg of IgG.

APPLICATIONS Centrifuge tube to remove product from lid. Optimal working dilutions should be determined experimentally by the investigator. Prepare working dilution immediately before use.

Western Blot 1:2,000 - 1:10,000

Immunoprecipitation 2 - 10 µg/mg lysate

APPLICATION NOTES Western blot of immunoprecipitates performed using Normal Pig Serum (Cat. No. S100-020), Goat anti-Rabbit Light Chain HRP Conjugate (Cat. No. A120-113P) and 4-8% SDS-PAGE (link to IP-western blot protocol in Additional Info section below).

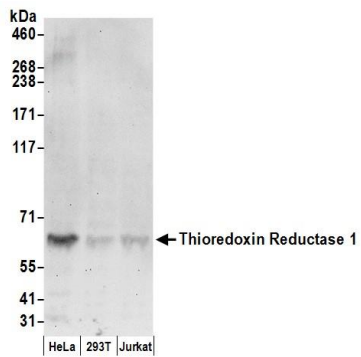
Western blot of lysates performed using standard western blot reagents and 4-8% SDS-PAGE.

ADDITIONAL INFO <https://www.bethyl.com/product/A304-791A>

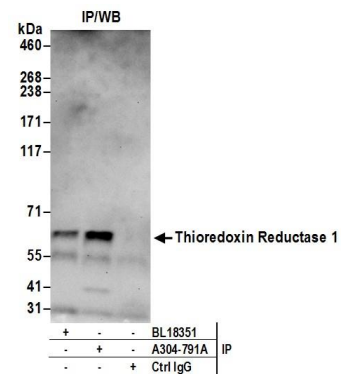
Use the link above to view SDS, a current list of citations, and other product specific information.

IP-western blot protocol: https://www.bethyl.com/content/protocol_IP_WB

This document certifies that this product has met all of the quality control standards defined by Bethyl Laboratories, Inc.
Eric McIntush, PhD | Chief Scientific Officer Date: June 21, 2019



Detection of human Thioredoxin Reductase 1 by western blot. *Samples:* Whole cell lysate (50 µg) from HeLa, HEK293T, and Jurkat cells prepared using NETN lysis buffer. *Antibody:* Affinity purified rabbit anti-Thioredoxin Reductase 1 antibody A304-791A (lot A304-791A-1) used for WB at 0.1 µg/ml. *Detection:* Chemiluminescence with an exposure time of 30 seconds.



Detection of human Thioredoxin Reductase 1 by western blot of immunoprecipitates. *Samples:* Whole cell lysate (0.5 or 1.0 mg per IP reaction; 20% of IP loaded) from HeLa cells prepared using NETN lysis buffer. *Antibodies:* Affinity purified rabbit anti-Thioredoxin Reductase 1 antibody A304-791A (lot A304-791A-1) used for IP at 6 µg per reaction. Thioredoxin Reductase 1 was also immunoprecipitated by rabbit anti-Thioredoxin Reductase 1 antibody BL18351. For blotting immunoprecipitated Thioredoxin Reductase 1, A304-791A was used at 1 µg/ml. *Detection:* Chemiluminescence with an exposure time of 30 seconds.