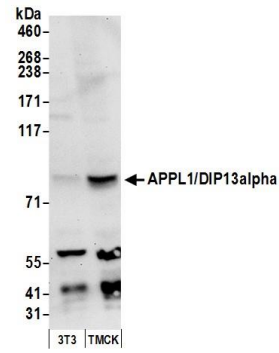


Detection of human APPL1/DIP13alpha by western blot.
Samples: Whole cell lysate (50 µg) from HeLa, HEK293T, and Jurkat cells prepared using NETN lysis buffer.
Antibody: Affinity purified rabbit anti-APPL1/DIP13alpha antibody A304-782A (lot A304-782A-1) used for WB at 0.1 µg/ml.
Detection: Chemiluminescence with an exposure time of 10 seconds.



Detection of mouse APPL1/DIP13alpha by western blot.
Samples: Whole cell lysate (50 µg) from NIH 3T3 and TCMK-1 cells prepared using NETN lysis buffer.
Antibody: Affinity purified rabbit anti-APPL1/DIP13alpha antibody A304-782A (lot A304-782A-1) used for WB at 0.1 µg/ml.
Detection: Chemiluminescence with an exposure time of 30 seconds.