

# ELAC2 Antibody

Rabbit Polyclonal

Antigen Affinity Purified

Protein ID Q9BQ52

Catalog No. A304-774A

GeneID 60528

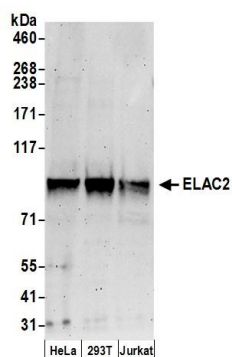
Lot No. A304-774A-1



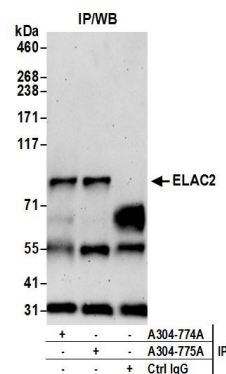
<b>APPLICATIONS</b>	WB, IP, IHC						
<b>SPECIES REACTIVITY</b>	Human, Mouse						
<b>PRESUMED REACTIVITY</b>	Based on 100% sequence identity, this antibody is predicted to react with Gorilla and Chimpanzee						
<b>AMOUNT</b>	100 µl						
<b>CONCENTRATION</b>	1000 µg/ml						
<b>STORAGE/SHELF LIFE</b>	2 – 8° C / 1 year from date of receipt						
<b>PHYSICAL STATE</b>	Liquid						
<b>BUFFER</b>	Tris-citrate/phosphate buffer, pH 7 to 8 containing 0.09% Sodium Azide						
<b>ISOTYPE</b>	IgG						
<b>ORIGIN</b>	USA						
<b>PRODUCTION PROCEDURES</b>	<p>Antibody was affinity purified using an epitope specific to ELAC2 immobilized on solid support.</p> <p>The epitope recognized by A304-774A maps to a region between residue 150 to 200 of human Zinc phosphodiesterase ELAC protein 2 using the numbering given in entry Q9BQ52 (GeneID 60528).</p> <p>Antibody concentration was determined by extinction coefficient: absorbance at 280 nm of 1.4 equals 1.0 mg of IgG.</p>						
<b>APPLICATIONS</b>	<p>Centrifuge tube to remove product from lid. Optimal working dilutions should be determined experimentally by the investigator. Prepare working dilution immediately before use.</p> <table><tr><td>Western Blot</td><td>1:1,000 – 1:5,000</td></tr><tr><td>Immunoprecipitation</td><td>2 – 10 µg/mg lysate</td></tr><tr><td>Immunohistochemistry</td><td>1:500 – 1:2,000. Epitope retrieval with citrate buffer pH 6.0 is recommended for FFPE tissue sections.</td></tr></table>	Western Blot	1:1,000 – 1:5,000	Immunoprecipitation	2 – 10 µg/mg lysate	Immunohistochemistry	1:500 – 1:2,000. Epitope retrieval with citrate buffer pH 6.0 is recommended for FFPE tissue sections.
Western Blot	1:1,000 – 1:5,000						
Immunoprecipitation	2 – 10 µg/mg lysate						
Immunohistochemistry	1:500 – 1:2,000. Epitope retrieval with citrate buffer pH 6.0 is recommended for FFPE tissue sections.						
<b>APPLICATION NOTES</b>	<p>Western blot of immunoprecipitates performed using Normal Pig Serum (Cat. No. S100-020), Goat anti-Rabbit Light Chain HRP Conjugate (Cat. No. A120-113P) and 4-8% SDS-PAGE (link to IP-western blot protocol in Additional Info section below).</p> <p>Western blot of lysates performed using standard western blot reagents and 4-8% SDS-PAGE.</p>						
<b>IHC HUMAN CONTROLS</b>	Linitis Plastica Stomach Cancer						
<b>IHC MOUSE CONTROLS</b>	Plasmacytoma						
<b>ADDITIONAL INFO</b>	<p><a href="https://www.bethyl.com/product/A304-774A">https://www.bethyl.com/product/A304-774A</a></p> <p>Use the link above to view SDS, a current list of citations, and other product specific information.</p> <p>IP-western blot protocol: <a href="https://www.bethyl.com/content/protocol_IP_WB">https://www.bethyl.com/content/protocol_IP_WB</a></p>						

This document certifies that this product has met all of the quality control standards defined by Bethyl Laboratories, Inc.  
Eric McIntush, PhD | Chief Scientific Officer

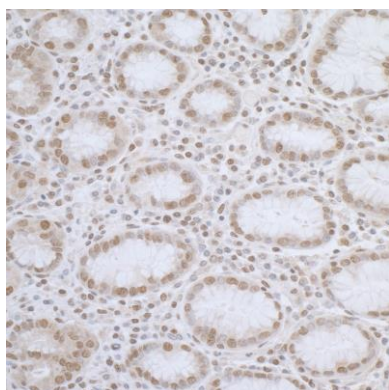
Date: June 21, 2019



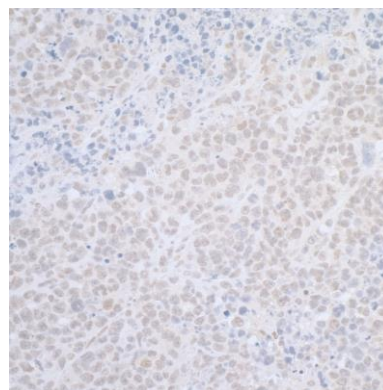
**Detection of human ELAC2 by western blot.** *Samples:* Whole cell lysate (50 µg) from HeLa, HEK293T, and Jurkat cells prepared using NETN lysis buffer. *Antibody:* Affinity purified rabbit anti-ELAC2 antibody A304-774A (lot A304-774A-1) used for WB at 0.4 µg/ml. *Detection:* Chemiluminescence with an exposure time of 3 minutes.



**Detection of human ELAC2 by western blot of immunoprecipitates.** *Samples:* Whole cell lysate (0.5 or 1.0 mg per IP reaction; 20% of IP loaded) from 293T cells prepared using NETN lysis buffer. *Antibody:* Affinity purified rabbit anti-ELAC2 antibody A304-774A (lot A304-774A-1) used for IP at 6 µg per reaction. ELAC2 was also immunoprecipitated by rabbit anti-ELAC2 antibody A304-775A. For blotting immunoprecipitated ELAC2, A304-774A was used at 0.4 µg/ml. *Detection:* Chemiluminescence with an exposure time of 3 minutes.



**Detection of human ELAC2 by immunohistochemistry.** *Sample:* FFPE section of human stomach. *Antibody:* Affinity purified rabbit anti- ELAC2 (Cat. No. A304-774A Lot1) used at a dilution of 1:1,000 (1 µg/ml). *Detection:* DAB



**Detection of mouse ELAC2 by immunohistochemistry.** *Sample:* FFPE section of mouse plasmacytoma. *Antibody:* Affinity purified rabbit anti- ELAC2 (Cat. No. A304-774A Lot1) used at a dilution of 1:1,000 (1 µg/ml). *Detection:* DAB