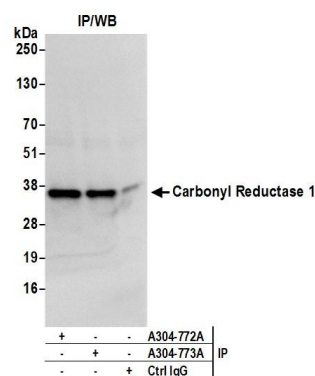


**Detection of human Carbonyl Reductase 1/CBR1 by western blot.** *Samples:* Whole cell lysate (50 µg) from HeLa, HEK293T, and Jurkat cells prepared using NETN lysis buffer. *Antibody:* Affinity purified rabbit anti-Carbonyl Reductase 1/CBR1 antibody A304-773A (lot A304-773A-1) used for WB at 0.1 µg/ml. *Detection:* Chemiluminescence with an exposure time of 3 seconds.



**Detection of human Carbonyl Reductase 1/CBR1 by western blot of immunoprecipitates.** *Samples:* Whole cell lysate (0.5 or 1.0 mg per IP reaction; 20% of IP loaded) from HeLa cells prepared using NETN lysis buffer. *Antibody:* Affinity purified rabbit anti-Carbonyl Reductase 1/CBR1 antibody A304-773A (lot A304-773A-1) used for IP at 6 µg per reaction. Carbonyl Reductase 1/CBR1 was also immunoprecipitated by rabbit anti-Carbonyl Reductase 1/CBR1 antibody A304-772A. For blotting immunoprecipitated Carbonyl Reductase 1/CBR1, A304-773A was used at 1 µg/ml. *Detection:* Chemiluminescence with an exposure time of 1 second.