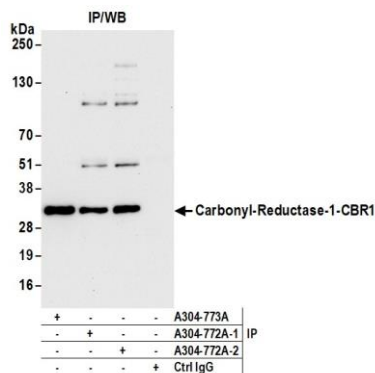


Detection of human Carbonyl Reductase 1/CBR1 by western blot. *Samples:* Whole cell lysate (10 µg) from GaMG, HEK293T, MCF-7, and HeLa cells prepared using NETN lysis buffer. *Antibody:* Affinity purified rabbit anti-Carbonyl Reductase 1/CBR1 antibody A304-772A Lot 2 used for WB at 0.04 µg/ml. *Detection:* Chemiluminescence with an exposure time of 10 seconds.



Detection of human Carbonyl Reductase 1/CBR1 by western blot of immunoprecipitates. *Samples:* Whole cell lysate (1.0 mg per IP reaction; 20% of IP loaded) from HEK293T cells prepared using NETN lysis buffer. *Antibodies:* Affinity purified rabbit anti-Carbonyl Reductase 1/CBR1 antibody A304-772A Lot 2 used for IP at 6 µg per reaction. Carbonyl Reductase 1/CBR1 was also immunoprecipitated by a previous lot of this antibody (A304-772A Lot 1) and rabbit anti-Carbonyl Reductase 1/CBR1 antibody A304-773A. For blotting immunoprecipitated Carbonyl Reductase 1/CBR1, A304-772A was used at 0.04 µg/ml. *Detection:* Chemiluminescence with an exposure time of 10 seconds.