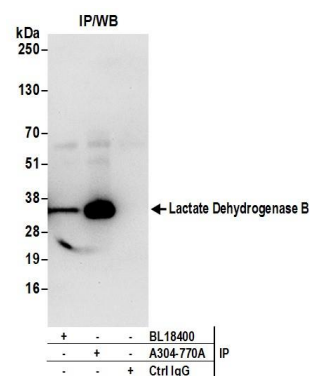


**Detection of human and mouse Lactate Dehydrogenase B by western blot.** *Samples:* Whole cell lysate (50  $\mu$ g) from HeLa, HEK293T, Jurkat, mouse TCMK-1, and mouse NIH 3T3 cells prepared using NETN lysis buffer. *Antibody:* Affinity purified rabbit anti-Lactate Dehydrogenase B antibody A304-770A (lot A304-770A-1) used for WB at 0.1  $\mu$ g/ml. *Detection:* Chemiluminescence with an exposure time of 10 seconds.



**Detection of human Lactate Dehydrogenase B by western blot of immunoprecipitates.** *Samples:* Whole cell lysate (0.5 or 1.0 mg per IP reaction; 20% of IP loaded) from 293T cells prepared using NETN lysis buffer. *Antibody:* Affinity purified rabbit anti-Lactate Dehydrogenase B antibody A304-770A (lot A304-770A-1) used for IP at 6  $\mu$ g per reaction. Lactate Dehydrogenase B was also immunoprecipitated by rabbit anti-Lactate Dehydrogenase B antibody BL18400. For blotting immunoprecipitated Lactate Dehydrogenase B, A304-770A was used at 0.4  $\mu$ g/ml. *Detection:* Chemiluminescence with an exposure time of 10 seconds.