

Catalase/CAT Antibody

Rabbit Polyclonal

Antigen Affinity Purified

Protein ID P04040

Catalog No. A304-767A

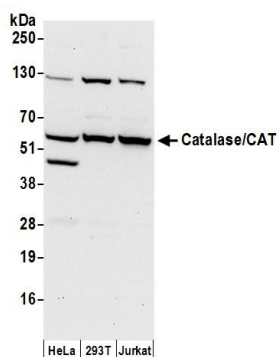
GeneID 847

Lot No. A304-767A-1



APPLICATIONS	WB, IP
SPECIES REACTIVITY	Human
PRESUMED REACTIVITY	Based on 100% sequence identity, this antibody is predicted to react with Orangutan
AMOUNT	100 µl
CONCENTRATION	1000 µg/ml
STORAGE/SHELF LIFE	2 - 8° C / 1 year from date of receipt
PHYSICAL STATE	Liquid
BUFFER	Tris-citrate/phosphate buffer, pH 7 to 8 containing 0.09% Sodium Azide
ISOTYPE	IgG
ORIGIN	USA
PRODUCTION PROCEDURES	Antibody was affinity purified using an epitope specific to Catalase/CAT immobilized on solid support. The epitope recognized by A304-767A maps to a region between residue 477 to 527 of human Catalase using the numbering given in entry P04040 (GeneID 847). Antibody concentration was determined by extinction coefficient: absorbance at 280 nm of 1.4 equals 1.0 mg of IgG.
APPLICATIONS	Centrifuge tube to remove product from lid. Optimal working dilutions should be determined experimentally by the investigator. Prepare working dilution immediately before use. Western Blot 1:1,000 - 1:5,000 Immunoprecipitation 2 - 10 µg/mg lysate
APPLICATION NOTES	Western blot of immunoprecipitates performed using Normal Pig Serum (Cat. No. S100-020), Goat anti-Rabbit Light Chain HRP Conjugate (Cat. No. A120-113P) and 4-20% SDS-PAGE (link to IP-western blot protocol in Additional Info section below). Western blot of lysates performed using standard western blot reagents and 4-20% SDS-PAGE.
ADDITIONAL INFO	https://www.bethyl.com/product/A304-767A Use the link above to view SDS, a current list of citations, and other product specific information. IP-western blot protocol: https://www.bethyl.com/content/protocol_IP_WB

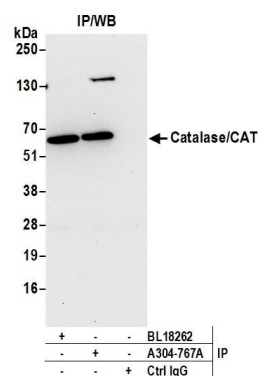
This document certifies that this product has met all of the quality control standards defined by Bethyl Laboratories, Inc.
Eric McIntush, PhD | Chief Scientific Officer Date: June 21, 2019



Detection of human Catalase/CAT by western blot.

Samples: Whole cell lysate (50 µg) from HeLa, HEK293T, and Jurkat cells prepared using NETN lysis buffer.

Antibody: Affinity purified rabbit anti-Catalase/CAT antibody A304-767A (lot A304-767A-1) used for WB at 0.4 µg/ml. *Detection:* Chemiluminescence with an exposure time of 30 seconds.



Detection of human Catalase/CAT by western blot of immunoprecipitates.

Samples: Whole cell lysate (0.5 or 1.0 mg per IP reaction; 20% of IP loaded) from 293T cells prepared using NETN lysis buffer. *Antibody:* Affinity purified rabbit anti-Catalase/CAT antibody A304-767A (lot A304-767A-1) used for IP at 6 µg per reaction. Catalase/CAT was also immunoprecipitated by rabbit anti-Catalase/CAT antibody BL18262. For blotting immunoprecipitated Catalase/CAT, A304-767A was used at 0.4 µg/ml. *Detection:* Chemiluminescence with an exposure time of 30 seconds.