

# PHGDH Antibody

Rabbit Polyclonal

|                           |            |             |
|---------------------------|------------|-------------|
| Antigen Affinity Purified | RefSeq ID  | NP_006614.2 |
| Catalog No. A304-732A     | Uniprot ID | O43175      |
| Lot No. 2                 | GeneID     | 26227       |

---

|                              |   |
|------------------------------|---|
| <b>APPLICATIONS</b>          | WB, IP, IHC   |
| <b>SPECIES REACTIVITY</b>    | Human, Mouse  |
| <b>PRESUMED REACTIVITY</b>   | Based on 100% sequence identity, this antibody is predicted to react with Bovine, Pig, Orangutan and Chimpanzee |
| <b>AMOUNT</b>                | 100 µl  |
| <b>CONCENTRATION</b>         | 1000 µg/ml  |
| <b>STORAGE/SHELF LIFE</b>    | 2 – 8°C / 1 year from date of receipt   |
| <b>PHYSICAL STATE</b>        | Liquid  |
| <b>BUFFER</b>                | Tris-citrate/phosphate buffer, pH 7 to 8 containing 0.09% Sodium Azide  |
| <b>ISOTYPE</b>               | IgG   |
| <b>ORIGIN</b>                | USA   |
| <b>PRODUCTION PROCEDURES</b> | Antibody was affinity purified using an epitope specific to PHGDH immobilized on solid support.                 |

The epitope recognized by A304-732A maps to a region between residue 1 to 50 of human Phosphoglycerate Dehydrogenase using the numbering given in entry NP\_006614.2 (GeneID 26227).

Antibody concentration was determined by extinction coefficient: absorbance at 280 nm of 1.4 equals 1.0 mg of IgG.

|                     |   |
|---------------------|---|
| <b>APPLICATIONS</b> | Centrifuge tube to remove product from lid. Optimal working dilutions should be determined experimentally by the investigator. Prepare working dilution immediately before use. |
|                     | Western Blot 1:2,000 – 1:10,000   |
|                     | Immunoprecipitation 2 – 10 µg/mg lysate   |
|                     | Immunohistochemistry 1:500 to 1:2,000. Epitope retrieval with citrate buffer pH6.0 is recommended for FFPE tissue sections.   |

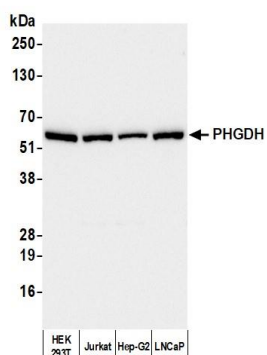
**IHC HUMAN CONTROLS** Breast Carcinoma, Ovarian Carcinoma, Prostate Carcinoma

**IHC MOUSE CONTROLS** Renal Cell Carcinoma, Teratoma

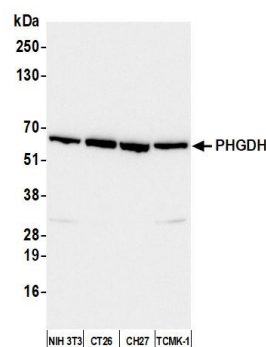
**ADDITIONAL INFO** <https://www.fortislife.com/p/A304-732A>

Use the link above to view SDS, a current list of citations, and other product specific information.

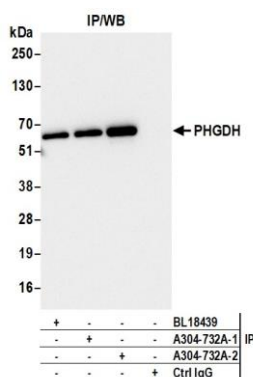
This document certifies that this product has met all of the quality control standards defined by Bethyl Laboratories, Inc.  
Michael Spencer, PhD Date: April 14, 2023



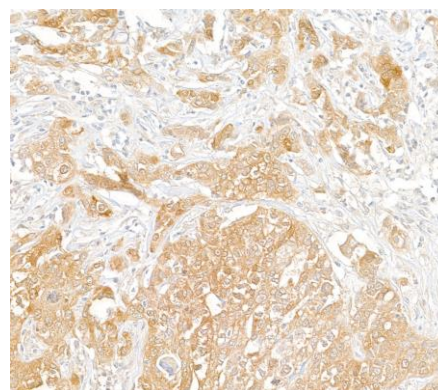
**Detection of human PHGDH by western blot.** *Samples:* Whole cell lysate (10 µg) from HEK293T, Jurkat, Hep-G2, and LNCaP cells prepared using NETN lysis buffer. *Antibody:* Affinity purified rabbit anti-PHGDH antibody (A304-732A-2 lot 2) used for WB at 0.1 µg/ml. *Detection:* Chemiluminescence with an exposure time of 30 seconds.



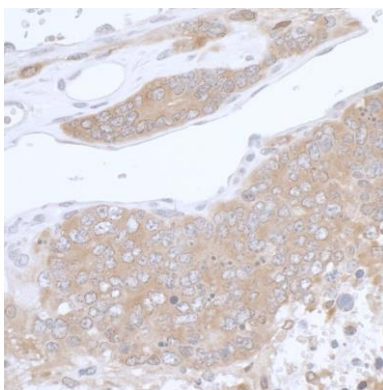
**Detection of mouse PHGDH by western blot.** *Samples:* Whole cell lysate (10 µg) from NIH 3T3, CT26, CH27, and TCMK-1 cells prepared using NETN lysis buffer. *Antibody:* Affinity purified rabbit anti-PHGDH antibody (A304-732A-2 lot 2) used for WB at 0.1 µg/ml. *Detection:* Chemiluminescence with an exposure time of 30 seconds.



**Detection of human PHGDH by western blot of immunoprecipitates.** *Samples:* Whole cell lysate (1.0 mg per IP reaction; 10% of IP loaded) from HEK293T cells prepared using NETN lysis buffer. *Antibodies:* Affinity purified rabbit anti-PHGDH antibody (A304-732A lot 2) used for IP at 6 µg per reaction. PHGDH was also immunoprecipitated by a previous lot of this antibody (A304-732A lot 1) and a second antibody against a different epitope of PHGDH (BL18439). For blotting immunoprecipitated PHGDH, A304-732A was used at 0.1 µg/ml. *Detection:* Chemiluminescence with an exposure time of 3 seconds.



**Detection of human PHGDH by immunohistochemistry.** *Sample:* FFPE section of human breast carcinoma. *Antibody:* Affinity purified rabbit anti-PHGDH (Cat. No. A304-732A Lot2) used at a dilution of 1:1,000 (1 µg/ml). *Detection:* DAB



**Detection of mouse PHGDH by immunohistochemistry.**  
*Sample:* FFPE section of mouse teratoma. *Antibody:* Affinity purified rabbit anti-PHGDH (Cat. No. A304-732A Lot1) used at a dilution of 1:1,000 (1 µg/ml). *Detection:* DAB