

# COPB1 Antibody

Rabbit Polyclonal

Antigen Affinity Purified

Protein ID NP\_001137533.1

Catalog No. A304-723A

GeneID 1315

Lot No. A304-723A-1



|                              |  |
|------------------------------|--|
| <b>APPLICATIONS</b>          | IP   |
| <b>SPECIES REACTIVITY</b>    | Human  |
| <b>PRESUMED REACTIVITY</b>   | Based on 100% sequence identity, this antibody is predicted to react with Mouse, Rat, Chicken, Bovine, Pig and Orangutan |
| <b>AMOUNT</b>                | 100 µl   |
| <b>CONCENTRATION</b>         | 1000 µg/ml   |
| <b>STORAGE/SHELF LIFE</b>    | 2 - 8° C / 1 year from date of receipt   |
| <b>PHYSICAL STATE</b>        | Liquid   |
| <b>BUFFER</b>                | Tris-citrate/phosphate buffer, pH 7 to 8 containing 0.09% Sodium Azide   |
| <b>ISOTYPE</b>               | IgG  |
| <b>ORIGIN</b>                | USA  |
| <b>PRODUCTION PROCEDURES</b> | Antibody was affinity purified using an epitope specific to COPB1 immobilized on solid support.                          |

The epitope recognized by A304-723A maps to a region between residue 675 to 725 of human Coatomer Protein Complex, Subunit Beta 1 using the numbering given in entry NP\_001137533.1 (GeneID 1315).

Antibody concentration was determined by extinction coefficient: absorbance at 280 nm of 1.4 equals 1.0 mg of IgG.

**APPLICATIONS** Centrifuge tube to remove product from lid. Optimal working dilutions should be determined experimentally by the investigator. Prepare working dilution immediately before use.

Western Blot Not recommended. Use rabbit anti-COPB1 antibody A304-724A.

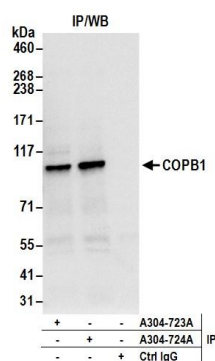
Immunoprecipitation 2 - 10 µg/mg lysate

**APPLICATION NOTES** Western blot of immunoprecipitates performed using Normal Pig Serum (Cat. No. S100-020), Goat anti-Rabbit Light Chain HRP Conjugate (Cat. No. A120-113P) and 4-8% SDS-PAGE (link to IP-western blot protocol in Additional Info section below).

**ADDITIONAL INFO** <https://www.bethyl.com/product/A304-723A>

Use the link above to view SDS, a current list of citations, and other product specific information. IP-western blot protocol: [https://www.bethyl.com/content/protocol\\_IP\\_WB](https://www.bethyl.com/content/protocol_IP_WB)

This document certifies that this product has met all of the quality control standards defined by Bethyl Laboratories, Inc.  
Eric McIntush, PhD | Chief Scientific Officer Date: June 21, 2019



**Detection of human COPB1 by western blot of immunoprecipitates.** *Samples:* Whole cell lysate (0.5 or 1.0 mg per IP reaction; 20% of IP loaded) from 293T cells prepared using NETN lysis buffer. *Antibodies:* Affinity purified rabbit anti-COPB1 antibody A304-723A (lot A304-723A-1) used for IP at 6 µg per reaction. COPB1 was also immunoprecipitated by rabbit anti-COPB1 antibody A304-724A. For blotting immunoprecipitated COPB1, A304-723A was used at 0.4 µg/ml. *Detection:* Chemiluminescence with an exposure time of 3 seconds.