

PCIF1 Antibody

Rabbit Polyclonal

Antigen Affinity Purified

Protein ID NP_071387.1

Catalog No. A304-711A

GeneID 63935

Lot No. A304-711A-1



APPLICATIONS	WB, IP
SPECIES REACTIVITY	Human, Mouse
AMOUNT	100 µl
CONCENTRATION	1000 µg/ml
STORAGE/SHELF LIFE	2 - 8° C / 1 year from date of receipt
PHYSICAL STATE	Liquid
BUFFER	Tris-citrate/phosphate buffer, pH 7 to 8 containing 0.09% Sodium Azide
ISOTYPE	IgG
ORIGIN	USA
PRODUCTION PROCEDURES	Antibody was affinity purified using an epitope specific to PCIF1 immobilized on solid support. The epitope recognized by A304-711A maps to a region between residue 654 to 704 of human PDX1 C-terminal Inhibiting Factor 1 using the numbering given in entry NP_071387.1 (GeneID 63935).

Antibody concentration was determined by extinction coefficient: absorbance at 280 nm of 1.4 equals 1.0 mg of IgG.

APPLICATIONS Centrifuge tube to remove product from lid. Optimal working dilutions should be determined experimentally by the investigator. Prepare working dilution immediately before use.

Western Blot 1:1,000 - 1:5,000

Immunoprecipitation 2 - 10 µg/mg lysate

APPLICATION NOTES Western blot of immunoprecipitates performed using Normal Pig Serum (Cat. No. S100-020), Goat anti-Rabbit Light Chain HRP Conjugate (Cat. No. A120-113P) and 4-8% SDS-PAGE (link to IP-western blot protocol in Additional Info section below).

Western blot of lysates performed using standard western blot reagents and 4-8% SDS-PAGE.

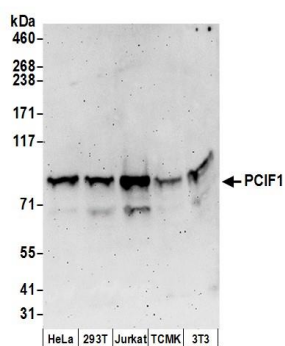
ADDITIONAL INFO

<https://www.bethyl.com/product/A304-711A>

Use the link above to view SDS, a current list of citations, and other product specific information.

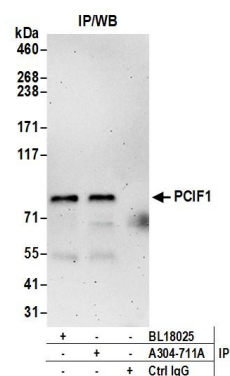
IP-western blot protocol: https://www.bethyl.com/content/protocol_IP_WB

This document certifies that this product has met all of the quality control standards defined by Bethyl Laboratories, Inc.
Eric McIntush, PhD | Chief Scientific Officer Date: June 21, 2019



Detection of human and mouse PCIF1 by western blot.

Samples: Whole cell lysate (50 µg) from HeLa, HEK293T, Jurkat, mouse TCMK-1, and mouse NIH 3T3 cells prepared using NETN lysis buffer. **Antibodies:** Affinity purified rabbit anti-PCIF1 antibody A304-711A (lot A304-711A-1) used for WB at 0.4 µg/ml. **Detection:** Chemiluminescence with an exposure time of 3 minutes.



Detection of human PCIF1 by western blot of immunoprecipitates.

Samples: Whole cell lysate (0.5 or 1.0 mg per IP reaction; 20% of IP loaded) from 293T cells prepared using NETN lysis buffer. **Antibodies:** Affinity purified rabbit anti-PCIF1 antibody A304-711A (lot A304-711A-1) used for IP at 6 µg per reaction. PCIF1 was also immunoprecipitated by rabbit anti-PCIF1 antibody BL18025. For blotting immunoprecipitated PCIF1, A304-711A was used at 0.4 µg/ml. **Detection:** Chemiluminescence with an exposure time of 3 minutes.