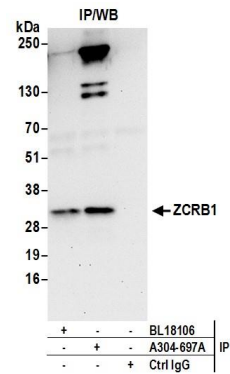


**Detection of human and mouse ZCRB1 by western blot.**  
*Samples:* Whole cell lysate (50 µg) from HeLa, HEK293T, Jurkat, mouse TCMK-1, and mouse NIH 3T3 cells prepared using NETN lysis buffer. *Antibodies:* Affinity purified rabbit anti-ZCRB1 antibody A304-697A (lot A304-697A-1) used for WB at 0.1 µg/ml. *Detection:* Chemiluminescence with an exposure time of 3 minutes.



**Detection of human ZCRB1 by western blot of immunoprecipitates.**  
*Samples:* Whole cell lysate (0.5 or 1.0 mg per IP reaction; 20% of IP loaded) from 293T cells prepared using NETN lysis buffer. *Antibodies:* Affinity purified rabbit anti-ZCRB1 antibody A304-697A (lot A304-697A-1) used for IP at 6 µg per reaction. ZCRB1 was also immunoprecipitated by rabbit anti-ZCRB1 antibody BL18106. For blotting immunoprecipitated ZCRB1, A304-697A was used at 0.4 µg/ml. *Detection:* Chemiluminescence with an exposure time of 30 seconds.