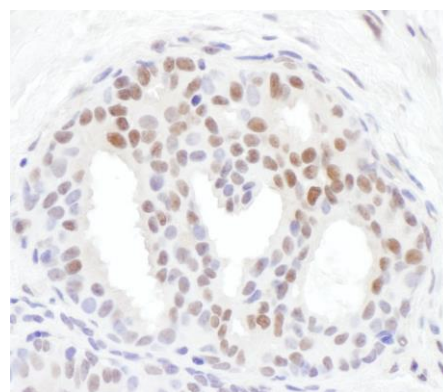


Detection of human Chk1, Phospho (S317) by western blot. *Samples:* Whole cell lysate (50 µg) from HeLa cells prepared using NETN lysis buffer treated with hydroxyurea (2mM for 24 hours), etoposide (100uM for 4 hours), or untreated. *Antibodies:* Affinity purified rabbit anti-Chk1, Phospho (S317) antibody A304-673A (lot A304-673A-1) used for WB at 0.2 µg/ml. *Detection:* Chemiluminescence with an exposure time of 3 minutes.



Detection of human Chk1, Phospho (S317) by immunohistochemistry. *Sample:* FFPE section of human breast carcinoma. *Antibody:* Affinity purified rabbit anti-Chk1, Phospho (S317) (Cat. No. A304-673A Lot1) used at a dilution of 1:1,000 (1 µg/ml). *Detection:* DAB. *Counterstain:* IHC Hematoxylin (blue).