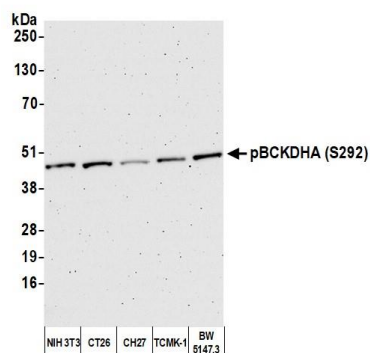
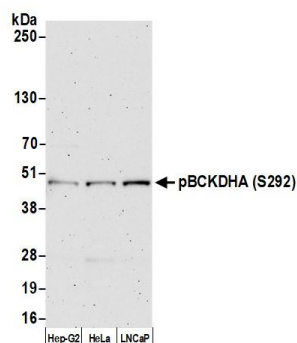


Detection of human pBCKDHA (S292) by western blot of immunoprecipitates. *Samples:* Whole cell lysate (1 mg for IP; 20% of IP loaded) from HeLa cells treated with phosphatase (+) or mock treated (-). *Antibody:* Affinity purified rabbit anti-pBCKDHA (S292) antibody (A304-672A lot 12) used for WB at 0.04 $\mu\text{g}/\text{ml}$. *Detection:* Chemiluminescence with an exposure time of 3 minutes. Lower Panel: Rabbit anti-BCKDHA antibody (A303-790A).



Detection of mouse pBCKDHA (S292) by western blot. *Samples:* Whole cell lysate (10 μg) from NIH 3T3, CT26, CH27, TCMK-1, and BW5147.3 cells prepared using NETN lysis buffer. *Antibody:* Affinity purified rabbit anti-pBCKDHA (S292) antibody (A304-672A lot 12) used for WB at 0.04 $\mu\text{g}/\text{ml}$. *Detection:* Chemiluminescence with an exposure time of 3 minutes.



Detection of human pBCKDHA (S292) by western blot. *Samples:* Whole cell lysate (10 μg) from Hep-G2, HeLa, and LNCaP cells prepared using NETN lysis buffer. *Antibody:* Affinity purified rabbit anti-pBCKDHA (S292) antibody (A304-672A lot 12) used for WB at 0.04 $\mu\text{g}/\text{ml}$. *Detection:* Chemiluminescence with an exposure time of 3 minutes.