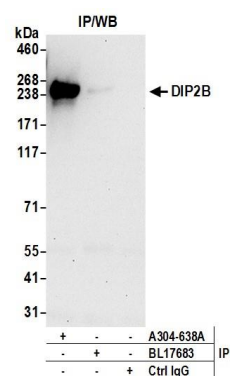


#### Detection of human and mouse DIP2B by western blot.

**Samples:** Whole cell lysate (50 µg) from HeLa, HEK293T, Jurkat, mouse TCMK-1, and mouse NIH 3T3 cells prepared using NETN lysis buffer. **Antibodies:** Affinity purified rabbit anti-DIP2B antibody A304-638A (lot A304-638A-1) used for WB at 0.1 µg/ml. **Detection:** Chemiluminescence with an exposure time of 30 seconds.



#### Detection of human DIP2B by western blot of immunoprecipitates.

**Samples:** Whole cell lysate (0.5 or 1.0 mg per IP reaction; 20% of IP loaded) from Jurkat cells prepared using NETN lysis buffer. **Antibodies:** Affinity purified rabbit anti-DIP2B antibody A304-638A (lot A304-638A-1) used for IP at 6 µg per reaction. DIP2B was also immunoprecipitated by rabbit anti-DIP2B antibody BL17683. For blotting immunoprecipitated DIP2B, A304-638A was used at 0.4 µg/ml. **Detection:** Chemiluminescence with an exposure time of 30 seconds.