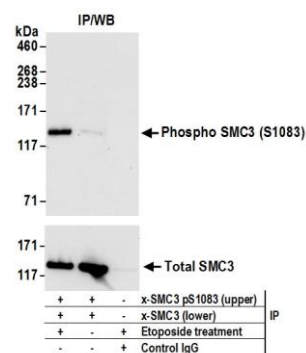


Detection of human Phospho SMC3 (S1083) by western blot (WB). *Samples:* Whole cell lysate (50 µg) from HeLa cells treated with 100 µM etoposide and/or 100 µM phosphatase for 4 hours (+) or mock treated (-) cells. *Antibodies:* Affinity purified rabbit anti-Phospho SMC3 (S1083) antibody A304-637A-2 used for WB at 1 µg/ml (upper panel); to detect total SMC3, rabbit anti-SMC3 A300-060A was used for WB at 0.1 µg/ml (lower panel). *Detection:* Chemiluminescence with an exposure time of 3 minutes (upper panel) or 10 seconds (lower panel).



Detection of human Phospho SMC3 (S1083) by western blot of immunoprecipitates. *Samples:* Whole cell lysate (1 mg for IP; 20% of IP loaded) from HeLa cells treated with 100 µM etoposide for 4 hours (+) or mock treated (-). *Antibodies:* Phospho SMC3 (S1083) was immunoprecipitated using rabbit anti-Phospho SMC3 (S1083) antibody A304-637A (lot A304-637A-2) at 6 µg per reaction. Total SMC3 was immunoprecipitated with rabbit anti-SMC3 antibody A300-060A. Rabbit anti-SMC3 antibody A300-060A was used for WB of IPs at 1 µg/ml. *Detection:* Chemiluminescence with an exposure time of 10 seconds.