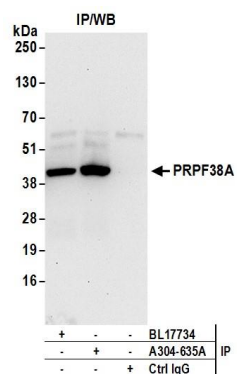


Detection of human and mouse PRPF38A by western blot.

Samples: Whole cell lysate (50 µg) from HeLa, HEK293T, Jurkat, mouse TCMK-1, and mouse NIH 3T3 cells prepared using NETN lysis buffer. *Antibodies:* Affinity purified rabbit anti-PRPF38A antibody A304-635A (lot A304-635A-1) used for WB at 0.1 µg/ml. *Detection:* Chemiluminescence with an exposure time of 30 seconds.



Detection of human PRPF38A by western blot of immunoprecipitates.

Samples: Whole cell lysate (0.5 or 1.0 mg per IP reaction; 20% of IP loaded) from 293T cells prepared using NETN lysis buffer. *Antibodies:* Affinity purified rabbit anti-PRPF38A antibody A304-635A (lot A304-635A-1) used for IP at 6 µg per reaction. PRPF38A was also immunoprecipitated by rabbit anti-PRPF38A antibody BL17734. For blotting immunoprecipitated PRPF38A, A304-635A was used at 1 µg/ml. *Detection:* Chemiluminescence with an exposure time of 30 seconds.