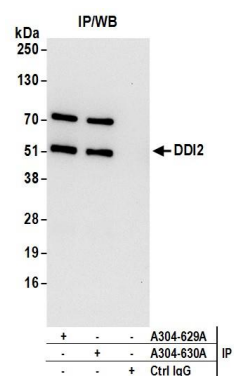


Detection of human and mouse DDI2 by western blot.

Samples: Whole cell lysate (50 µg) from HeLa, HEK293T, Jurkat, mouse TCMK-1, and mouse NIH 3T3 cells prepared using NETN lysis buffer. **Antibodies:** Affinity purified rabbit anti-DDI2 antibody A304-630A (lot A304-630A-1) used for WB at 0.1 µg/ml. **Detection:** Chemiluminescence with an exposure time of 3 minutes.



Detection of human DDI2 by western blot of immunoprecipitates.

Samples: Whole cell lysate (0.5 or 1.0 mg per IP reaction; 20% of IP loaded) from 293T cells prepared using NETN lysis buffer. **Antibodies:** Affinity purified rabbit anti-DDI2 antibody A304-630A (lot A304-630A-1) used for IP at 6 µg per reaction. DDI2 was also immunoprecipitated by rabbit anti-DDI2 antibody A304-629A. For blotting immunoprecipitated DDI2, A304-630A was used at 1 µg/ml. **Detection:** Chemiluminescence with an exposure time of 10 seconds.