

# SPECC1L Antibody

Rabbit Polyclonal

Antigen Affinity Purified

Protein ID XP\_005261463.1

Catalog No. A304-618A

GeneID 23384

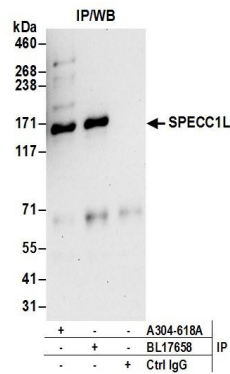
Lot No. A304-618A-1



<b>APPLICATIONS</b>	IP				
<b>SPECIES REACTIVITY</b>	Human				
<b>PRESUMED REACTIVITY</b>	Based on 100% sequence identity, this antibody is predicted to react with Chimpanzee				
<b>AMOUNT</b>	100 µl				
<b>CONCENTRATION</b>	1000 µg/ml				
<b>STORAGE/SHELF LIFE</b>	2 – 8° C / 1 year from date of receipt				
<b>PHYSICAL STATE</b>	Liquid				
<b>BUFFER</b>	Tris-citrate/phosphate buffer, pH 7 to 8 containing 0.09% Sodium Azide				
<b>ISOTYPE</b>	IgG				
<b>ORIGIN</b>	USA				
<b>PRODUCTION PROCEDURES</b>	<p>Antibody was affinity purified using an epitope specific to SPECC1L immobilized on solid support.</p> <p>The epitope recognized by A304-618A maps to a region between residue 1 to 50 of human Sperm Antigen with Calponin Homology and Coiled-Coil Domains 1-Like using the numbering given in entry XP_005261463.1 (GeneID 23384).</p> <p>Antibody concentration was determined by extinction coefficient: absorbance at 280 nm of 1.4 equals 1.0 mg of IgG.</p>				
<b>APPLICATIONS</b>	<p>Centrifuge tube to remove product from lid. Optimal working dilutions should be determined experimentally by the investigator. Prepare working dilution immediately before use.</p> <table><tr><td>Western Blot</td><td>Not recommended. A304-618A has not performed satisfactorily when used for WB of SPECC1L in crude preparations (e.g. whole cell lysate). This antibody can be used for WB of enriched (e.g. immunoprecipitated) sources of SPECC1L.</td></tr><tr><td>Immunoprecipitation</td><td>2 – 10 µg/mg lysate</td></tr></table>	Western Blot	Not recommended. A304-618A has not performed satisfactorily when used for WB of SPECC1L in crude preparations (e.g. whole cell lysate). This antibody can be used for WB of enriched (e.g. immunoprecipitated) sources of SPECC1L.	Immunoprecipitation	2 – 10 µg/mg lysate
Western Blot	Not recommended. A304-618A has not performed satisfactorily when used for WB of SPECC1L in crude preparations (e.g. whole cell lysate). This antibody can be used for WB of enriched (e.g. immunoprecipitated) sources of SPECC1L.				
Immunoprecipitation	2 – 10 µg/mg lysate				
<b>APPLICATION NOTES</b>	Western blot of immunoprecipitates performed using Normal Pig Serum (Cat. No. S100-020), Goat anti-Rabbit Light Chain HRP Conjugate (Cat. No. A120-113P) and 4-8% SDS-PAGE (link to IP-western blot protocol in Additional Info section below).				
<b>ADDITIONAL INFO</b>	<p><a href="https://www.bethyl.com/product/A304-618A">https://www.bethyl.com/product/A304-618A</a></p> <p>Use the link above to view SDS, a current list of citations, and other product specific information.</p> <p>IP-western blot protocol: <a href="https://www.bethyl.com/content/protocol_IP_WB">https://www.bethyl.com/content/protocol_IP_WB</a></p>				

This document certifies that this product has met all of the quality control standards defined by Bethyl Laboratories, Inc.  
Eric McIntush, PhD | Chief Scientific Officer

Date: June 21, 2019



**Detection of human SPECC1L by western blot of immunoprecipitates.** *Samples:* Whole cell lysate (0.5 or 1.0 mg per IP reaction; 20% of IP loaded) from 293T cells prepared using NETN lysis buffer. *Antibodies:* Affinity purified rabbit anti-SPECC1L antibody A304-618A (lot A304-618A-1) used for IP at 6 µg per reaction. SPECC1L was also immunoprecipitated by rabbit anti-SPECC1L antibody BL17658. For blotting immunoprecipitated SPECC1L, A304-618A was used at 1 µg/ml. *Detection:* Chemiluminescence with an exposure time of 30 seconds.