

# IWS1 Antibody

Rabbit Polyclonal

Antigen Affinity Purified Protein ID NP\_060439.2

Catalog No. A304-609A GeneID 55677

Lot No. A304-609A-2

---

<b>APPLICATIONS</b>	WB, IP
<b>SPECIES REACTIVITY</b>	Human, Mouse
<b>PRESUMED REACTIVITY</b>	Based on 100% sequence identity, this antibody is predicted to react with Rat
<b>AMOUNT</b>	100 µl
<b>CONCENTRATION</b>	1000 µg/ml
<b>STORAGE/SHELF LIFE</b>	2 – 8°C / 1 year from date of receipt
<b>PHYSICAL STATE</b>	Liquid
<b>BUFFER</b>	Tris-citrate/phosphate buffer, pH 7 to 8 containing 0.09% Sodium Azide
<b>ISOTYPE</b>	IgG
<b>ORIGIN</b>	USA
<b>PRODUCTION PROCEDURES</b>	Antibody was affinity purified using an epitope specific to IWS1 immobilized on solid support.

The epitope recognized by A304-609A maps to a region between residue 1 to 50 of human IWS1-Like Protein using the numbering given in entry NP\_060439.2 (GeneID 55677).

Antibody concentration was determined by extinction coefficient: absorbance at 280 nm of 1.4 equals 1.0 mg of IgG.

**APPLICATIONS** Centrifuge tube to remove product from lid. Optimal working dilutions should be determined experimentally by the investigator. Prepare working dilution immediately before use.

Western Blot 1:1,000 – 1:5,000

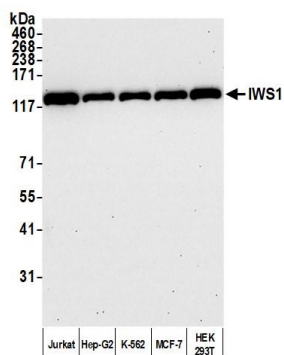
Immunoprecipitation 2 – 10 µg/mg lysate

**ADDITIONAL INFO** <https://www.bethyl.com/product/A304-609A>

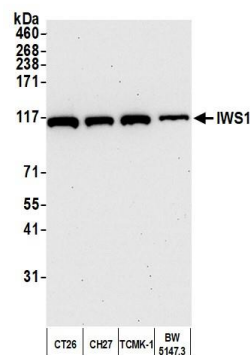
Use the link above to view SDS, a current list of citations, and other product specific information.

IP-western blot protocol: [https://www.bethyl.com/content/protocol\\_IP\\_WB](https://www.bethyl.com/content/protocol_IP_WB)

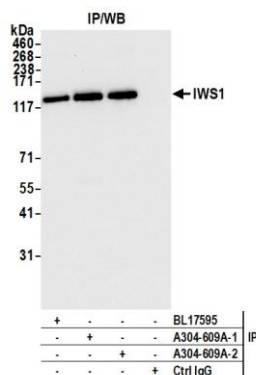
This document certifies that this product has met all of the quality control standards defined by Bethyl Laboratories, Inc.  
Michael Spencer, PhD Date: June 2, 2022



**Detection of human IWS1 by western blot.** *Samples:* Whole cell lysate (10 µg) from Jurkat, Hep-G2, K-562, MCF-7, and HEK293T cells prepared using NETN lysis buffer. *Antibody:* Affinity purified rabbit anti-IWS1 antibody (A304-609A lot 2) used for WB at 0.1 µg/ml. *Detection:* Chemiluminescence with an exposure time of 30 seconds.



**Detection of mouse IWS1 by western blot.** *Samples:* Whole cell lysate (10 µg) from CT26, CH27, TCMK-1, and BW5147.3 cells prepared using NETN lysis buffer. *Antibody:* Affinity purified rabbit anti-IWS1 antibody (A304-609A lot 2) used for WB at 0.1 µg/ml. *Detection:* Chemiluminescence with an exposure time of 30 seconds.



**Detection of human IWS1 by western blot of immunoprecipitates.** *Samples:* Whole cell lysate (1.0 mg per IP reaction; 10% of IP loaded) from HeLa cells prepared using NETN lysis buffer. *Antibodies:* Affinity purified rabbit anti-IWS1 antibody (A304-609A lot 2) used for IP at 6 µg per reaction. IWS1 was also immunoprecipitated by a previous lot of this antibody (A304-609A lot 1) and a second antibody against a different epitope of IWS1 (BL17594). For blotting immunoprecipitated IWS1, A304-609A was used at 0.1 µg/ml. *Detection:* Chemiluminescence with an exposure time of 3 seconds.